

FRIAR'S POINT VIEW

Mixed-use development

Barry, Wales, CF62 5TP

Friar's Point View is a mixed-use development proposal for a stunning coastal location in Barry, Wales. The building is a sustainable and ecological response to the need for residential and commercial spaces of the higher quality.

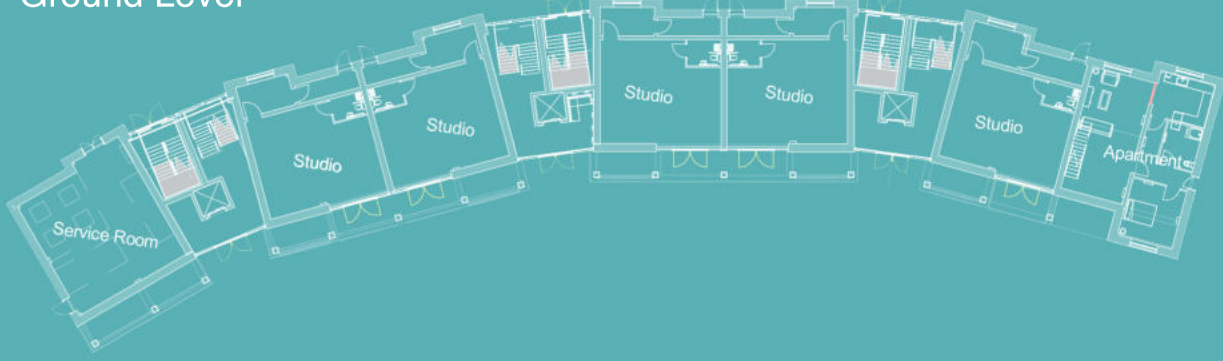


The design takes advantage of the coastal views, locating itself adjacent to the SW boundary. This maximises direct sunlight over the duration of each day, incorporating renewable energy, and comfortable living/working spaces throughout.

The building is split into occupied and circulation blocks, with access to each use of the building located at each elevation.

Floor Plans 1:100

Ground Level



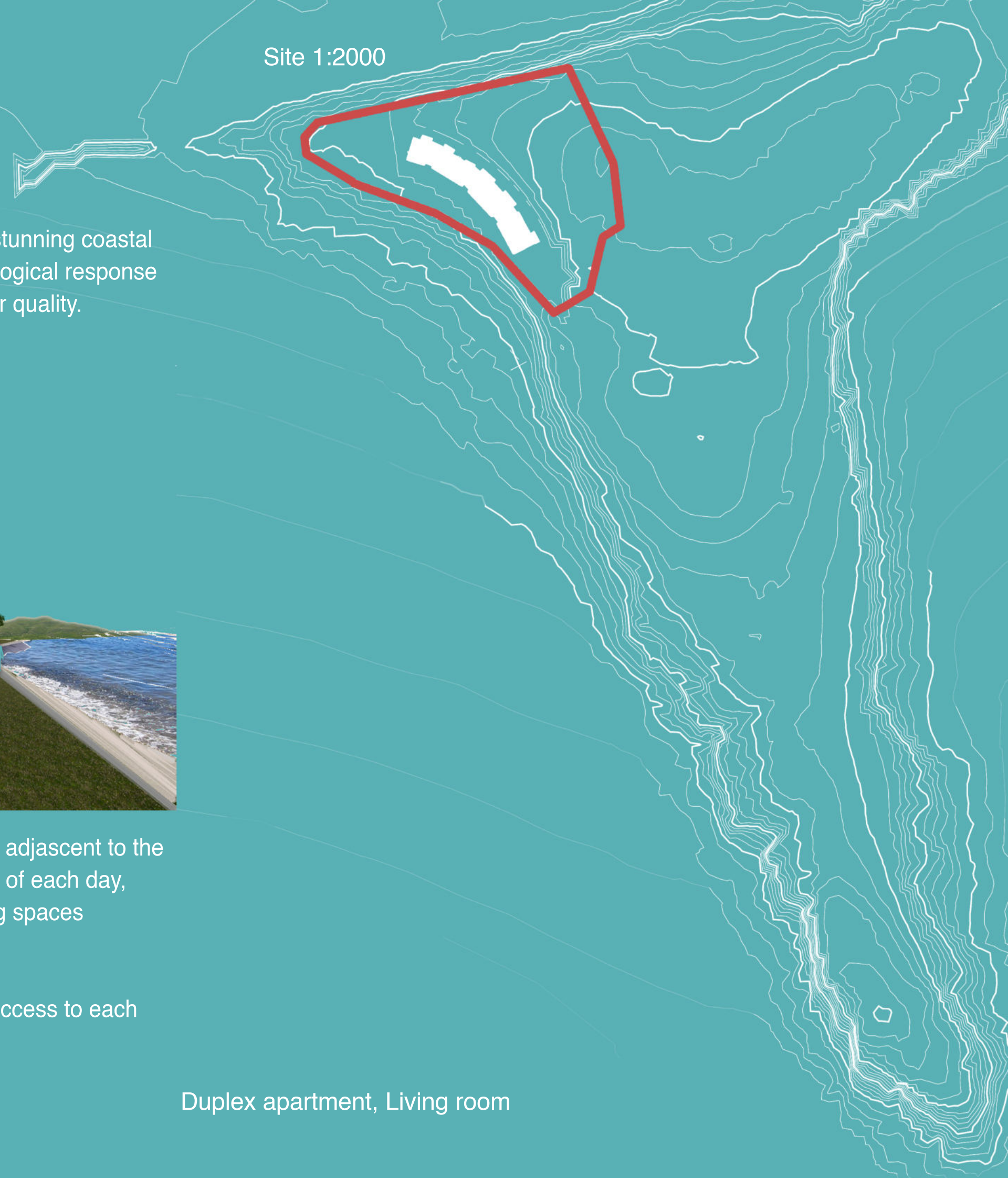
Level One



Level Three



Site 1:2000

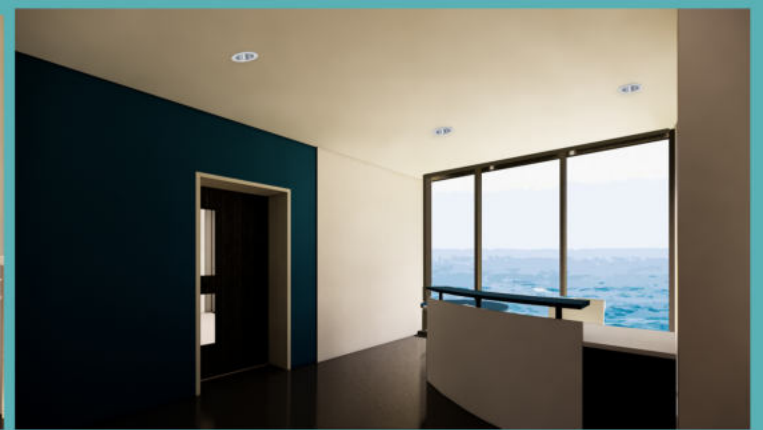
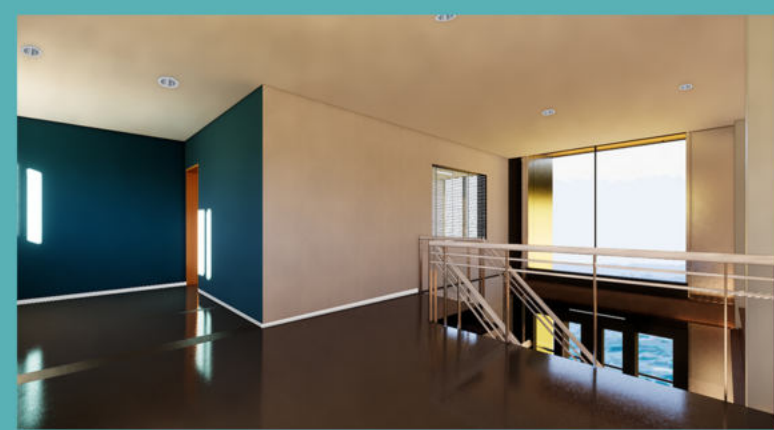


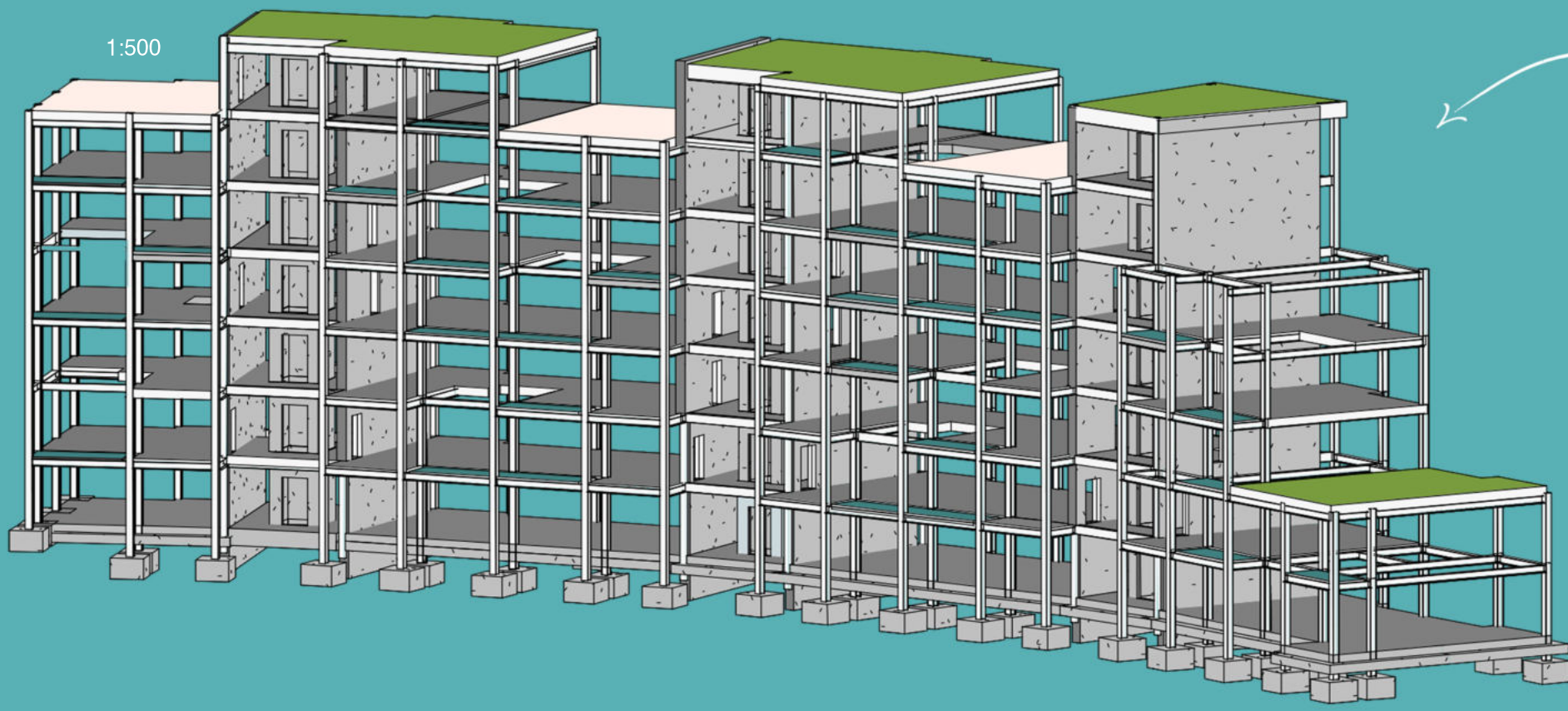
Duplex apartment, Living room



Spacious, naturally-lit rooms across the entire building offer open-plan layouts that are contemporary and fitting to each functional use. A continuation of natural colours from the external surroundings is themed throughout.

Two storey Office space





Hybrid Structural Frame

The structural frame is a hybrid design using TATA Steel Celsius 355 NH hot rolled steel that ties into large reinforced concrete sheer walls, forming the circulation spaces and lift shafts to roof level. The sheer walls act as a heat storage system via thermal mass, a sustainable secondary heating system

Structural decks infilled with reinforced composite concrete is repeated over each floor. Roofdecks provide the support for all the roof-load.

This hybrid system is capable of withstanding lateral forces from the coastal environment whilst reinforcing the building's strength throughout. Each system provides strength in the opposing compression/tension.

Sustainable Design & Technologies

Friar's Point View is a demonstration of sustainable and ecological design through the 3 'R's strategy ('R'educe, 'R'e-use, 'R'ecycle)

Materials



- 316L Marine Grade Stainless Steel
- Fully recyclable material
 - Re-usable material
 - Durable
 - Semi-mirrored finish
 - Locally sourced, links to Welsh steel industry

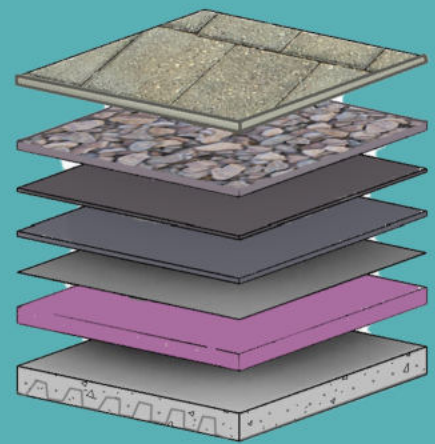


- Welsh Slate 'Z' Cladding
- Locally quarried material supporting local industry
 - Natural authentic material, contributing to Biophilic design
 - Re-usable

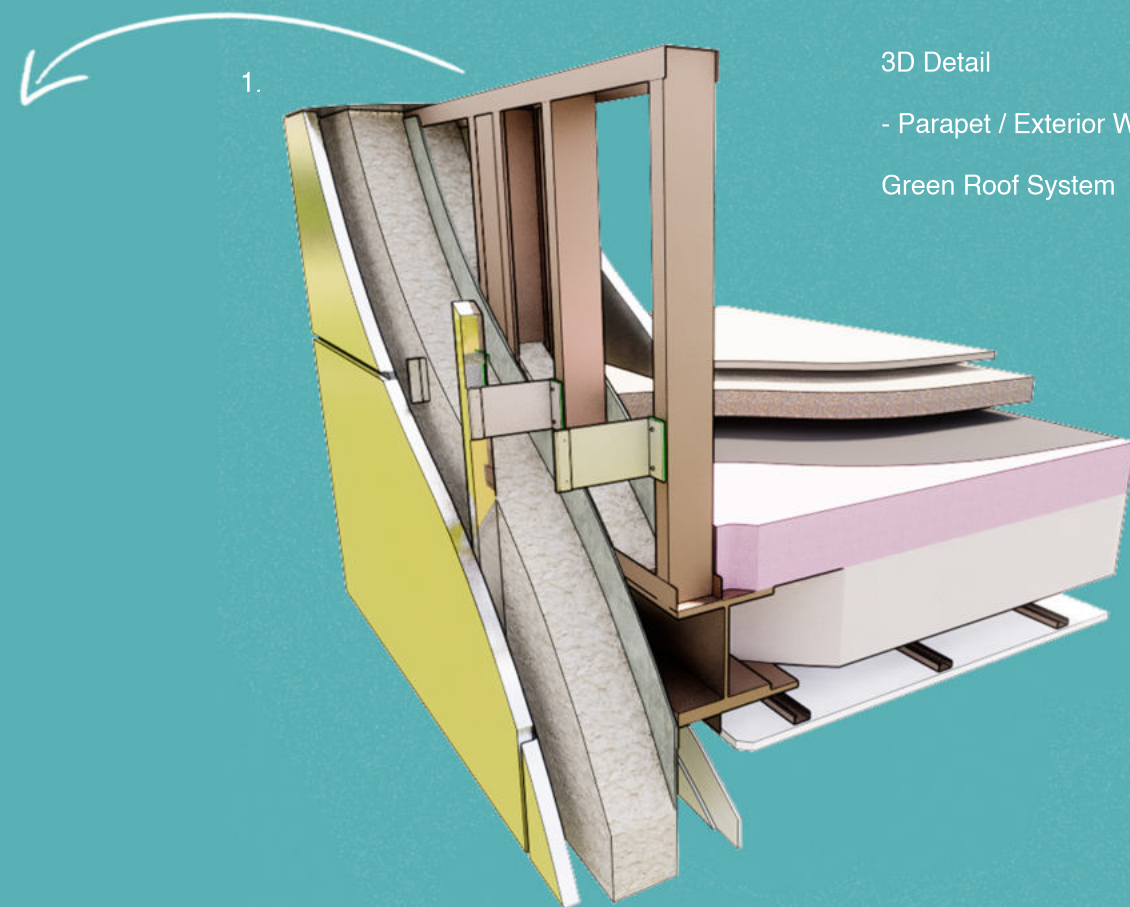
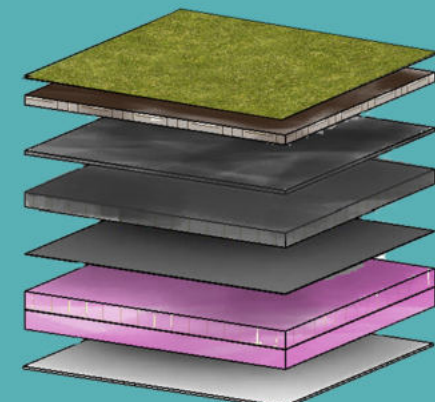


- ⚠️ Ballustrades protect all exposed edges from risk of falling
- 🚶 Suitable Fire safety routes/exits throughout building
- ☁️ Solar-control IGU's preventing solar gain and glare in work/living spaces
- 😊 Communal terrace spaces located on various levels
- ☀️ High amounts of specialised glazing, allowing controlled levels of sunlight into depth of building

Alumasc Blackdown Intensive
- Green Roof System



Bauder Extensive
- Green Roof System



3D Detail
- Parapet / Exterior Wall / Intensive Green Roof System

