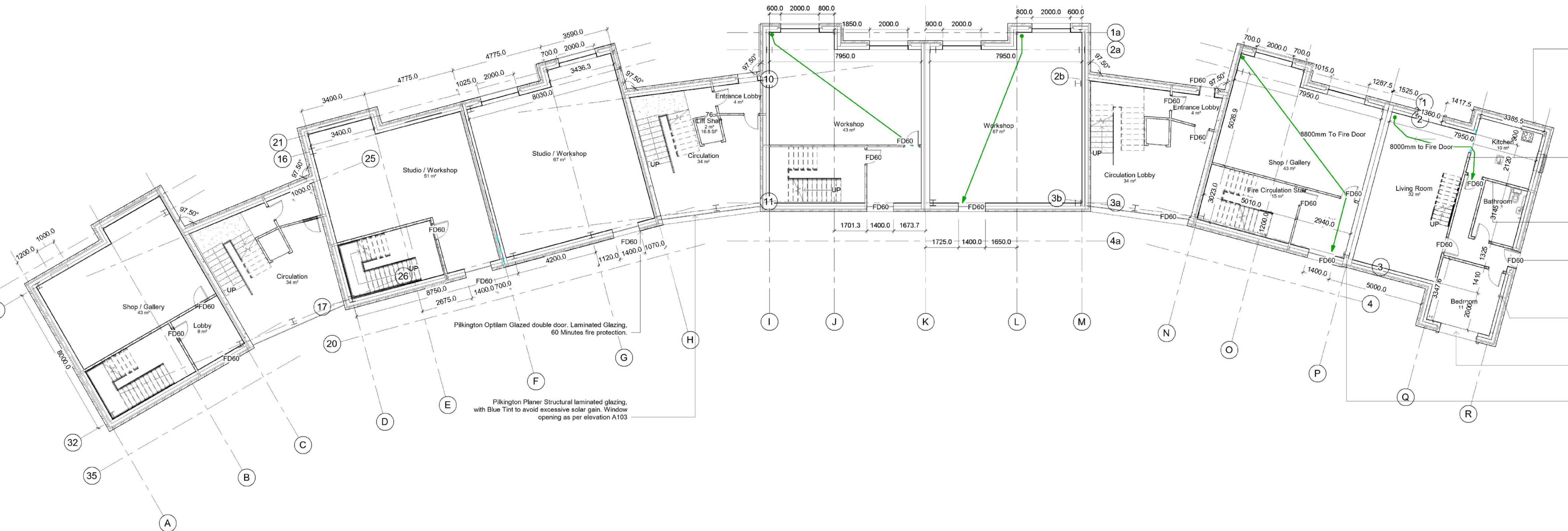


Do not scale from this drawing. If ambiguities are found or additional dimensions required, these must be brought to the attention of the design engineer. This drawing is to be used in conjunction with the all relevant project information including general arrangement drawings, specifications.

All works on this drawing must be carried out by a competent contractor, working to a risk assessment and method statement. Designers for assessment should also be consulted for the identification of any design risks the client or contractor may not otherwise be aware.



Semi-Cropped Blue Pennant Stone Wall To Be Built By Specialist Mason With Matching Mortar Joints finished with a Weather-Struck out face.

Wall Build up SFS with 150mm DUDSLAB + 150mm Flaxi to help achieve 0.15w/m<sup>2</sup> U-value. Waterproofed with 12.5mm Sinat Weather Defence Board. Fire Protection via Cavity Sock Closers around Window and Door Jambas as per DE4 and separating floor construction as in DE3. Fire Resistance to 60-minutes.

Standard Gypsum construction partitioning wall. Gyproframe 60mm C Studs at 600mm Centres, encased in 12.5mm gyproc plasterboard. Sealant placed at the head of the detail to manufacturers specification.

Two Layers of 12.5mm SounBloc each side of Gyproc C Studs at 600mm Centres with Gyproframe RB1 Resilient bar at 600mm to one side. 50mm Insul Acoustic Partition Roll (APR 1200) in the cavity. Bathroom acoustic to Approved Document E.

Bowater FD60 Minutes Fire Door with Smoke Seal. Painted to Brilliant White.

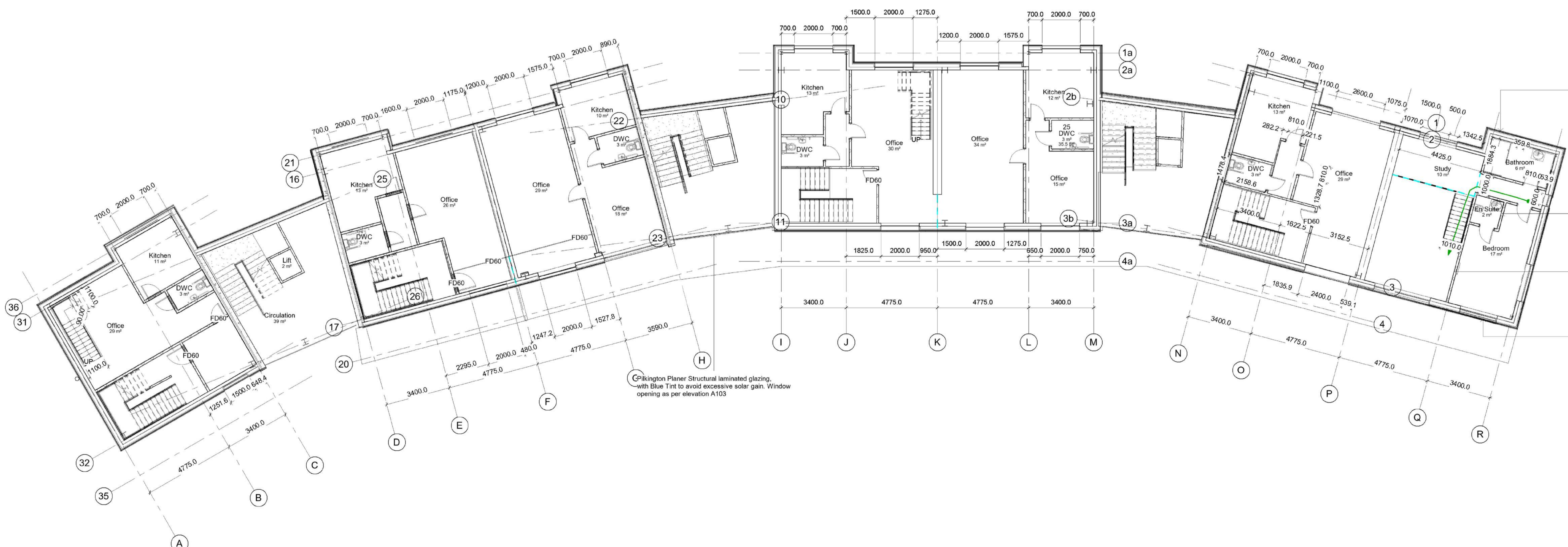
152mm Structural Column as per structural engineers specification. Embedded into exterior wall fabrication. Where column flanges can be seen, encasement is required. 15mm Gyproc F Firecase is used to line.

Pilkington Optisun Blue tinted, Argon Filled Double Glazing windows. 1.2w/m<sup>2</sup> U-value as per Approved Document L1a

305mm Structural Column as per structural engineers specification. Embedded into exterior wall fabrication. Where column flanges can be seen, encasement is required. 15mm Gyproc F Firecase is used to line.

**1 Level 0 Construction**  
1 : 100

Level 0 - FINISH SCHEDULE					
Number	Name	Ceiling Finish	Wall Finish	Floor Finish	Level
Apartment #1	Bathroom	Paint	Quartz Tiles	Quartz Tiles	Level 0
Apartment #1	Bedroom	Paint	Paint	Espresso Oak Laminate	Level 0
3	Circulation	Exposed Concrete	Concrete Shear Wall	Polished Screed	Level 0
15	Circulation	Exposed Concrete	Concrete Shear Wall	Polished Screed	Level 0
69	Circulation Lobby	Exposed Concrete	Paint	Polished Screed	Level 0
70	Entrance Lobby	Exposed Concrete	Paint	Polished Screed	Level 0
77	Entrance Lobby	Exposed Concrete	Paint	Polished Screed	Level 0
72	Fire Circulation Stair	Exposed Concrete	Concrete Shear Wall	Polished Screed	Level 0
Apartment #1	Kitchen	Paint	Ceramic Tile	Laminate	Level 0
6	Lift Shaft	N/A	Paint	N/A	Level 0
76	Lift Shaft	N/A	Paint	N/A	Level 0
Apartment #1	Living Room	N/A	Paint	Pale Oak Laminate	Level 0
61	Lobby	Exposed Concrete	Paint	Polished Screed	Level 0
71	Lobby	Exposed Concrete	Paint	Polished Screed	Level 0
7	Shop / Gallery	Paint	Paint	Polished Screed	Level 0
12	Shop / Gallery	Paint	Paint	Polished Screed	Level 0
2	Studio / Workshop	Paint	Paint	Polished Screed	Level 0
14	Studio / Workshop	Paint	Paint	Polished Screed	Level 0
4	Workshop	Paint	Paint	Polished Screed	Level 0
5	Workshop	Paint	Paint	Polished Screed	Level 0



400mm High, Rheinzinc Titanium Zinc Bright Rolled Cassette K25. Metal Thickness 1.5mm. prePATINA BLUE finish. With 20mm Shadowgap as per the manufacturers guidance. Fixed to 65mm Rheinzinc Aluminium Fastening Rail at 300mm centres. Fire rated to A1 in accordance with part B1 of the Approved Documents.

SFS Core with 150mm DUDSLAB + 150mm Flaxi to help achieve 0.15w/m<sup>2</sup> U-value. Waterproofed with 12.5mm Sinat Weather Defence Board. Fire Protection via Cavity Sock Closers around Window and Door Jambas as per DE4 and separating floor construction as in DE3. Fire Resistance to 60-minutes.

Two Layers of 12.5mm SounBloc each side of Gyproc C Studs at 600mm Centres with Gyproframe RB1 Resilient bar at 600mm to one side. 50mm Insul Acoustic Partition Roll (APR 1200) in the cavity. Bathroom acoustic to Approved Document E.

Standard Gypsum construction partitioning wall. Gyproframe 60mm C Studs at 600mm Centres, encased in 12.5mm gyproc plasterboard. Sealant placed at the head of the detail to manufacturers specification.

Pilkington Optisun Blue tinted, Argon Filled Double Glazing windows. 1.2w/m<sup>2</sup> U-value as per Approved Document L1a

**2 Level 1 Construction**  
1 : 100

Level 1 - FINISH SCHEDULE					
Number	Name	Ceiling Finish	Wall Finish	Floor Finish	Level
Office #1	Office	Paint	Paint	Carpet	Level 1
Apartment #1	Bedroom	Paint	Paint	Espresso Oak Laminate	Level 1
Apartment #1	Study	Paint	Paint	Espresso Oak Laminate	Level 1
Apartment #1	Bathroom	Paint	Quartz Tiles	Quartz Tiles	Level 1
Office #2	Office	Paint	Paint	Carpet	Level 1
Office #3*	Office	Paint	Paint	Carpet	Level 1
Office #2	Office	Paint	Paint	Carpet	Level 1
25	DWC	Paint	Paint	Quartz Tiles	Level 1
Office #3*	Kitchen	Paint	Ceramic Tile	Pale Oak Laminate	Level 1
Office #3*	DWC	Paint	Paint	Vinyl	Level 1
Office #4	Office	Paint	Paint	Carpet	Level 1
Office #5	Office	Paint	Paint	Carpet	Level 1
Office #4	Office	Paint	Paint	Carpet	Level 1
35	DWC	Paint	Paint	Vinyl	Level 1
Office #4	Kitchen	Paint	Ceramic Tile	Pale Oak Laminate	Level 1
Office #5	Kitchen	Paint	Ceramic Tile	Pale Oak Laminate	Level 1
Office #5	DWC	Paint	Paint	Vinyl	Level 1
40	Fire Escape	Exposed Concrete	Paint	Polished Screed	Level 1
Office #1	DWC	Paint	Paint	Vinyl	Level 1
Apartment #1	En Suite	Paint	Quartz Tiles	Quartz Tiles	Level 1
Office #6*	Office	Paint	Paint	Carpet	Level 1
Office #6*	Kitchen	Paint	Ceramic Tile	Pale Oak Laminate	Level 1
Office #6*	DWC	Paint	Paint	Vinyl	Level 1
49	Fire Escape	Exposed Concrete	Paint	Polished Screed	Level 1
Office #2	Kitchen	Paint	Ceramic Tile	Pale Oak Laminate	Level 1
73	Lobby	Paint	Paint	Polished Screed	Level 1
74	Circulation	Exposed Concrete	Paint	Polished Screed	Level 1
75	Lift	N/A	N/A	N/A	Level 1
Office #1	Kitchen	N/A	N/A	N/A	Level 1

Project  
XXX\_Friars\_PNT\_XXX

Drawing  
A101 GA Floor Plans

Client Name / Number  
Samuel Tumblebridge, 20124766

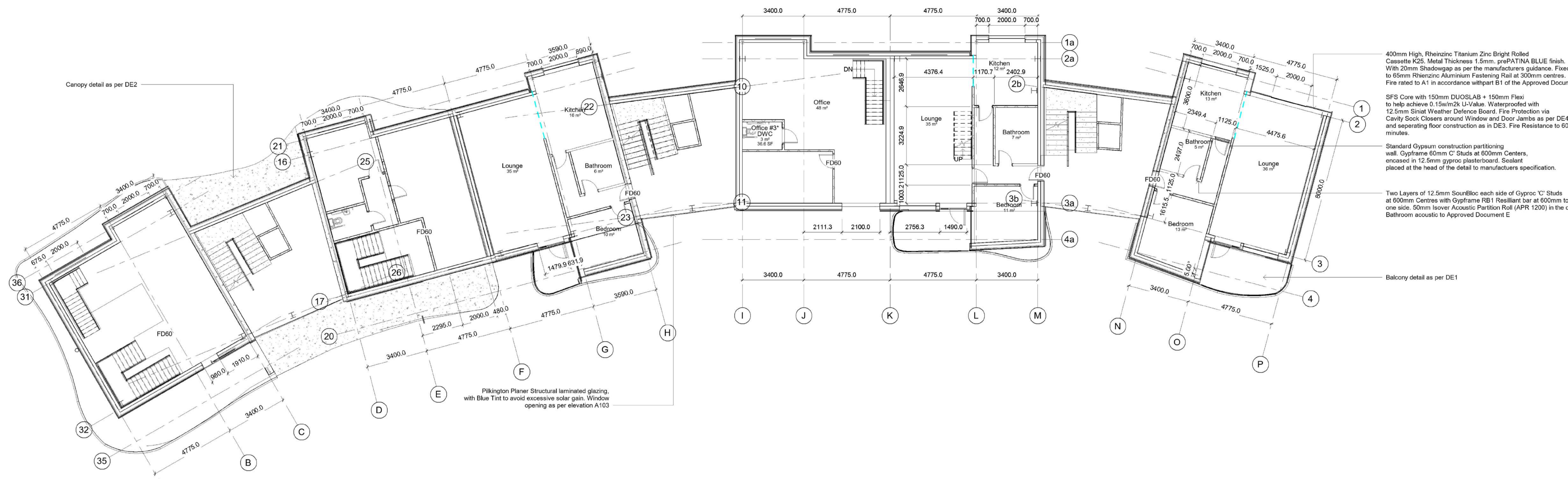
Scale @  
1 : 100  
Date  
04/23/20

Drawing  
A101 GA Floor Plans



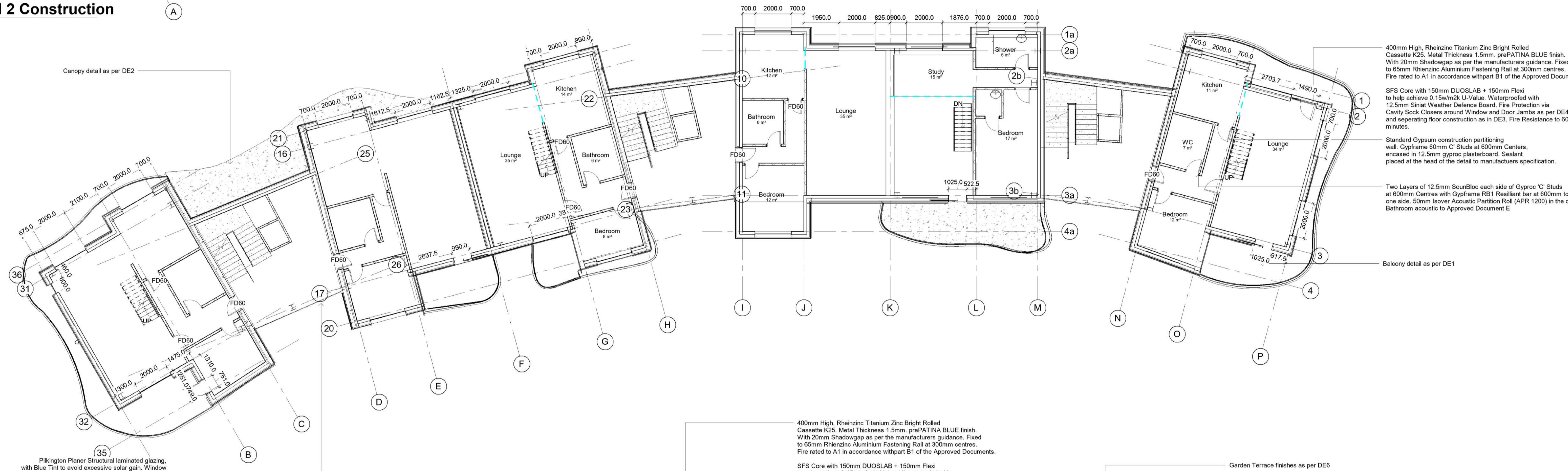
BSc (Hons) Architectural Design & Cardiff School of Art and Design | Llandaff Campus

Do not scale from this drawing. If ambiguities are found or additional dimensions required, these must be brought to the attention of the architect immediately. This drawing is to be read in conjunction with the all relevant project information including general arrangement drawings, specifications.



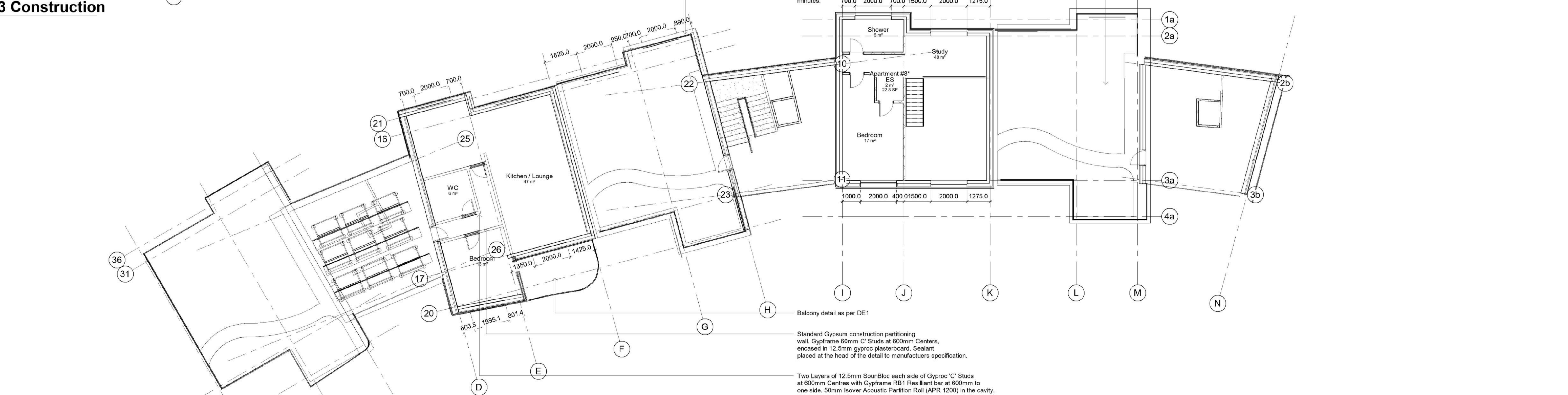
Level 2 - FINISH SCHEDULE					
Number	Name	Ceiling Finish	Wall Finish	Floor Finish	Level
Apartment #4	Lounge	Paint	Paint	Carpet	Level 2
Apartment #3*	Lounge	Paint	Paint	Carpet	Level 2
Apartment #2	Lounge	Paint	Paint	Carpet	Level 2
Apartment #2	Bedroom	Paint	Paint	Carpet	Level 2
Apartment #4	Bathroom	Paint	Paint	Carpet	Level 2
Apartment #2	Bathroom	Paint	Paint	Carpet	Level 2
Apartment #2	Kitchen	Paint	Paint	Carpet	Level 2
Apartment #3	Kitchen	Paint	Paint	Carpet	Level 2
Apartment #3*	Bathroom	Paint	Paint	Carpet	Level 2
Apartment #3*	Bedroom	Paint	Paint	Carpet	Level 2
Office #3*	DWC	Paint	Paint	Carpet	Level 2
Apartment #4	Kitchen	Paint	Paint	Carpet	Level 2
Apartment #4	Bedroom	Paint	Paint	Carpet	Level 2
Office #3*	Office	Paint	Paint	Carpet	Level 2

1 Level 2 Construction 1:100



Level 3 - FINISH SCHEDULE					
Number	Name	Ceiling Finish	Wall Finish	Floor Finish	Level
Apartment #7*	Lounge	Paint	Paint	Carpet	Level 3
Apartment #6	Lounge	Paint	Paint	Carpet	Level 3
Apartment #5*	Lounge	Paint	Paint	Carpet	Level 3
Apartment #6	Bedroom	Paint	Paint	Carpet	Level 3
Apartment #3*	Bedroom	Paint	Paint	Carpet	Level 3
Apartment #6	Bathroom	Paint	Paint	Carpet	Level 3
Apartment #3*	Bedroom	Paint	Paint	Carpet	Level 3
Apartment #3*	Shower	Paint	Paint	Carpet	Level 3
Apartment #5*	Bedroom	Paint	Paint	Carpet	Level 3
Apartment #5*	WC	Paint	Paint	Carpet	Level 3
Apartment #7*	Bedroom	Paint	Paint	Carpet	Level 3
Apartment #3*	Bedroom	Paint	Paint	Carpet	Level 3
Apartment #6	Bathroom	Paint	Paint	Carpet	Level 3
Apartment #3*	Study	Paint	Paint	Carpet	Level 3
Apartment #6	Kitchen	Paint	Paint	Carpet	Level 3
Apartment #7*	Kitchen	Paint	Paint	Carpet	Level 3
Apartment #5*	Kitchen	Paint	Paint	Carpet	Level 3

2 Level 3 Construction 1:100



Level 6 - FINISH SCHEDULE					
Number	Name	Ceiling Finish	Wall Finish	Floor Finish	Level
Apartment #9	WC	Paint	Paint	Carpet	Level 6
Apartment #9	Bedroom	Paint	Paint	Carpet	Level 6
Apartment #9	Kitchen / Lounge	Paint	Paint	Carpet	Level 6
Apartment #8*	Bedroom	Paint	Paint	Carpet	Level 6
Apartment #8*	ES	Paint	Paint	Carpet	Level 6
Apartment #8*	Shower	Paint	Paint	Carpet	Level 6
Apartment #8*	Study	Paint	Paint	Carpet	Level 6

3 Level 6 1:100

Project XXX\_Friars\_PNT\_XXX

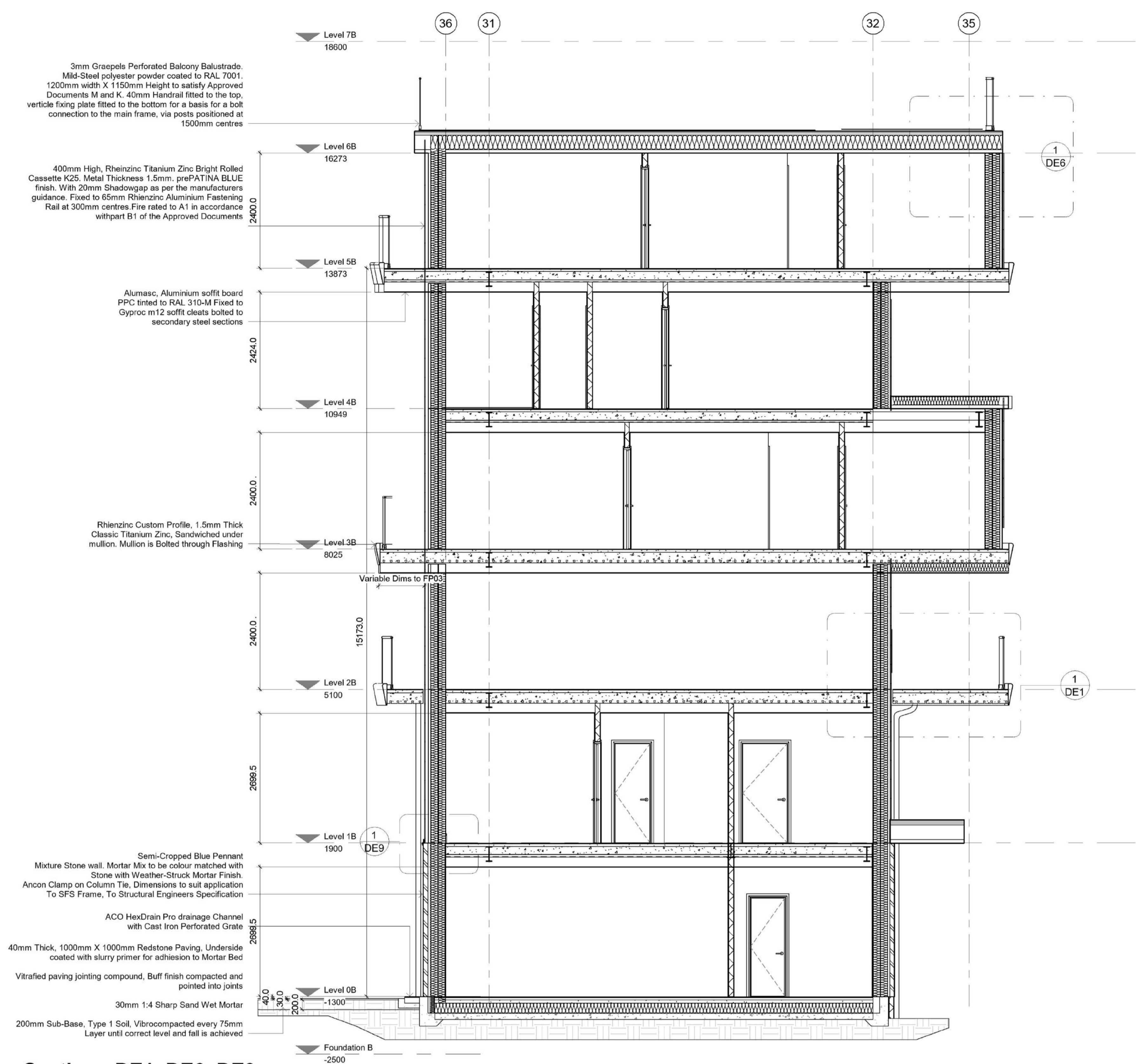
Drawing A102 GA Floor Plans

Client Name Samuel Tumbidge, 20124766

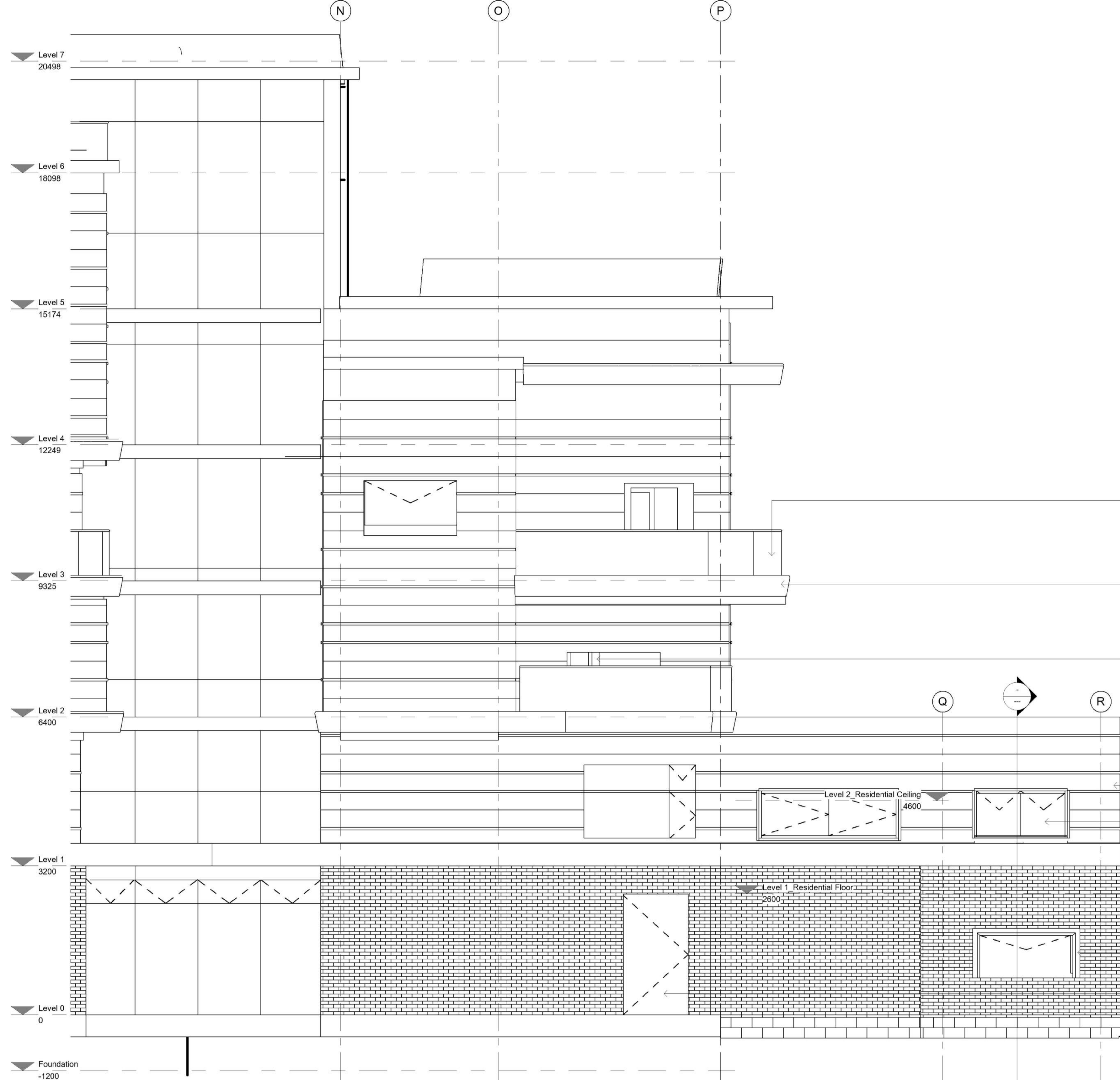
Scale 1:100 Date 05/04/20

Drawing A102 GA Floor Plans





1 Section - DE1, DE6, DE9  
1:50



2 South Elevation Crop  
1:50



3 Section 18  
1:100

Do not scale from this drawing. If ambiguities are found or additional dimensions required, these must be brought to the attention of the architect. The drawing is to be read in conjunction with the all relevant project information including general arrangement drawings, specifications.

All works on this drawing must be carried out by a competent contractor, working to a risk assessment and method statement. Designers take no responsibility for any errors or omissions. The contractor must ensure that the work is carried out in accordance with the specifications and standards.

--- Direction of opening element.  
Doors and Windows

3mm Grazepele Perforated Balustrade. Mid-Steel polyester powder coated to RAL 7001. 1200mm width X 1150mm Height to satisfy Approved Documents M and K. 40mm Handrail fitted to the top, vertical fixing plate fitted to the bottom for a bolt connection to the main frame, via posts positioned at 1500mm centres

Rheinzinc Custom Profile, 1.5mm Thick Classic Titanium Zinc. Sandwiched under mullion. Mullion is Bolted through Flashing

Decorinick Ltd, PVCU Endow 5000 NEO, Residential double glazed sliding door. Mullions and reveals to RAL 7035

400mm High, Rheinzinc Titanium Zinc Bright Rolled Cassette K25. Metal Thickness 1.5mm. prePATINA BLUE finish. With 20mm Shadowgap as per the manufacturers guidance. Fixed to 65mm Rheinzinc Aluminium Fastening Rail at 300mm centres. Fire rated to A1 in accordance with part B1 of the Approved Documents

Pilkington Optium Blue tinted, Argon Filled Double Glazing windows. 1.2w/m<sup>2</sup> U-Value as per Approved Document L1a

Sandstone Quoining window reveal detail. 100mm Thick, embedded into Semi-Cropped Blue Pennant Stone

Pilkington Optium Glazed double door. Laminated Glazing, 60 Minutes fire protection.

Project  
Sections and Elevation

Drawing  
A103

Client Name, Number  
Samuel Tumbidge, 20124766

Scale @  
As indicated 05/07/20

Drawing  
A103

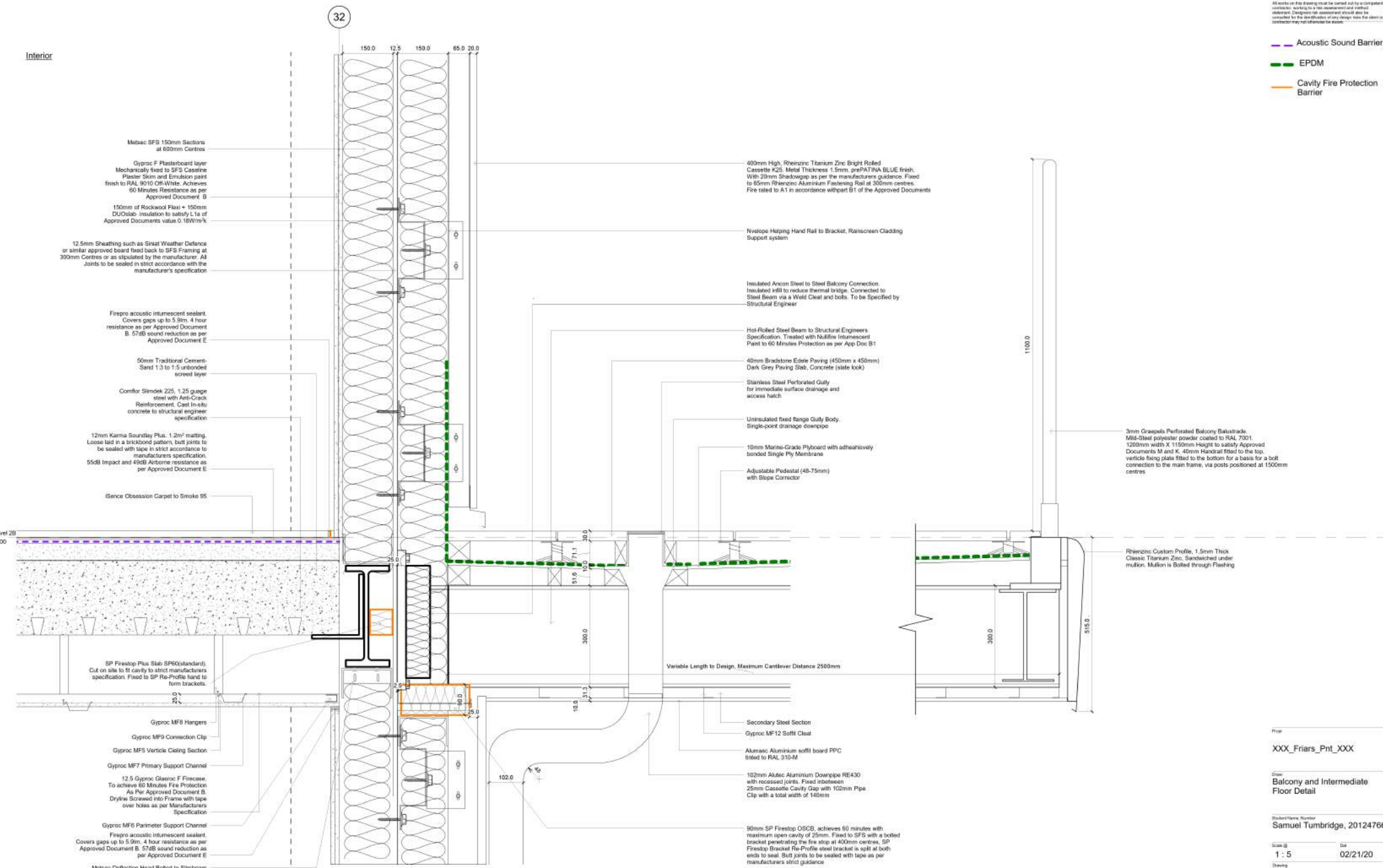
32

Interior

Do not scale from this drawing. All quantities are based on standard dimensions unless otherwise stated or brought to the attention of the drawing originator. This drawing is to be read in conjunction with the approved project information including general arrangement drawings.

All works on this drawing must be carried out by a competent contractor working to a risk assessment and method statement. Designers risk assessment should also be considered for the identification of any design risks. The client or contractor may not otherwise be aware.

- Acoustic Sound Barrier
- EPDM
- Cavity Fire Protection Barrier



**1 Balcony and intermediate floor Detail**  
1 : 5

Project Name: XXX\_Friars\_Pnt\_XXX

Client: Balcony and Intermediate Floor Detail

Project Name: Samuel Tumbridge, 20124766

Scale: 1 : 5 Date: 02/21/20

Drawing: DE1

Cardiff Metropolitan University  
Prifysgol Metropolitan Caerdydd

BSc (Hons) Architectural Design & Cardiff School of Art and Design | Cardiff Campus

28

Do not scale from this drawing. If ambiguities are found or additional dimensions required, these must be brought to the attention of the drawing originator. This drawing is to be read in conjunction with the all relevant project information including general arrangement drawings, specifications.

All works on this drawing must be carried out by a competent contractor, working to a risk assessment and method statement. Designers risk assessment should also be consulted for the identification of any design risks the client or contractor may not otherwise be aware.

400mm High, Rhenzinc Titanium Zinc Bright Rolled Cassette K25. Metal Thickness 1.5mm, prePATINA BLUE finish. With 20mm Shadowgap as per the manufacturers guidance. Fixed to 65mm Rhenzinc Aluminium Fastening Rail at 300mm centres. Fire rated to A1 in accordance with part B1 of the Approved Documents

Bespoke Rhenzinc Drip Flashing Profile, Titanium Zinc Bright Rolled with Triple Layer Lacquer

Cold Formed Mild Steel Framing

Bespoke Rhenzinc Balcony Profile Titanium Zinc, Bright Rolled with Triple Lacquer Layer Finish

Defender Seagull Spikes, BIRD0025. Stainless Steel

Dual layer Roofing Felt Bonded With Bitumen

Variable Length to Design, Maximum Cantilever 1500mm

Alumasc, Aluminium soffit board PPC tinted to RAL 310-M

Gyproc MF12 Soffit Cleat fixed to a hot rolled steel C Purlin

102mm Alutec Aluminium Downpipe RE430 with recessed joints. Fixed inbetween 25mm Cassette Cavity Gap with 102mm Pipe Clip with a total width of 140mm

25.0 50.0 150.0 10.0 150.0

Hot Rolled Steel frame. Supplied by Tata Steel Dimensions to be specified by Structural Engineer

-  Breather Membrane Tyvek DuPont
-  EPDM Membrane

Nvelope Helping-hand fixing

150mm of Rockwool Flexi + 150mm DUOstap insulation to satisfy L1a of Approved Documents value 0.18W/m²K

Hot rolled steel beam with Cold Form Steel Purlins for support to be specified by Structural Engineer

Metsec SFS, 150mm Sections. Deflection Head Fixed with 2no G1 fixings

12.5mm Sheathing such as Siniat Weather Defence or similar approved board fixed back to SFS Framing at 300mm Centres or as stipulated by the manufacturer. All joints to be sealed in strict accordance with the manufacturer's specification

102.0

**1 Facade Canopy Detail**  
1 : 5

Proj: XXX\_Friars\_Pnt\_XXX

Drawn: Facade Canopy Detail

Student Name, Number: Samuel Tumbridge, 20124766

Scale: 1 : 5 Date: 02/21/20

Drawing: DE2

Pnt 06/08/2020 16:37:03

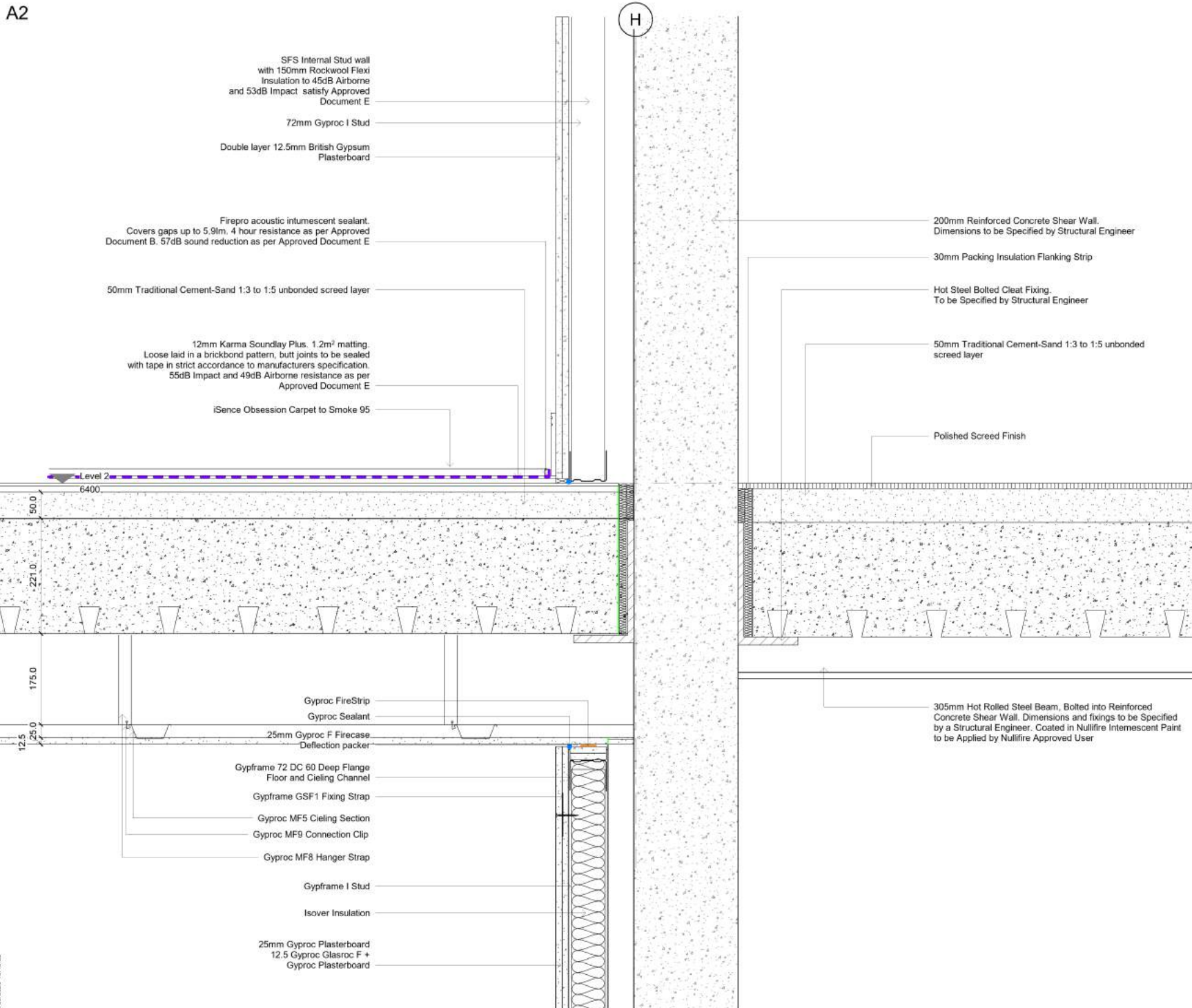
H

Do not scale from this drawing. If ambiguities are found or additional dimensions required, these must be brought to the attention of the drawing originator. This drawing is to be read in conjunction with the all relevant project information including general arrangement drawings, specifications.

All works on this drawing must be carried out by a competent contractor, working to a risk assessment and method statement. Designers risk assessment should also be consulted for the identification of any design risks the client or contractor may not otherwise be aware.

60 Minute Fire Strip

Acoustic Barrier



SFS Internal Stud wall with 150mm Rockwool Flexi Insulation to 45dB Airborne and 53dB Impact satisfy Approved Document E

72mm Gyproc I Stud

Double layer 12.5mm British Gypsum Plasterboard

Firepro acoustic intumescent sealant. Covers gaps up to 5.9m, 4 hour resistance as per Approved Document B. 57dB sound reduction as per Approved Document E

50mm Traditional Cement-Sand 1:3 to 1:5 unbonded screed layer

12mm Karma Soundlay Plus. 1.2m<sup>2</sup> matting. Loose laid in a brickbond pattern, but joints to be sealed with tape in strict accordance to manufacturers specification. 55dB Impact and 49dB Airborne resistance as per Approved Document E

iSense Obsession Carpet to Smoke 95

200mm Reinforced Concrete Shear Wall. Dimensions to be Specified by Structural Engineer

30mm Packing Insulation Flanking Strip

Hot Steel Bolted Cleat Fixing. To be Specified by Structural Engineer

50mm Traditional Cement-Sand 1:3 to 1:5 unbonded screed layer

Polished Screed Finish

305mm Hot Rolled Steel Beam, Bolted into Reinforced Concrete Shear Wall. Dimensions and fixings to be Specified by a Structural Engineer. Coated in Nullifire Intumescent Paint to be Applied by Nullifire Approved User

Level 2

6400

50.0

221.0

175.0

12.5

25.0

Gyproc FireStrip

Gyproc Sealant

25mm Gyproc F Firecase

Deflection packer

Gyproframe 72 DC 60 Deep Flange Floor and Ceiling Channel

Gyproframe GSF1 Fixing Strap

Gyproc MF5 Ceiling Section

Gyproc MF9 Connection Clip

Gyproc MF8 Hanger Strap

Gyproframe I Stud

Isover Insulation

25mm Gyproc Plasterboard

12.5 Gyproc Glasroc F+

Gyproc Plasterboard

Project: XXX\_Friars\_Pnt\_XXX

Drawn: Fire Escape to Dwelling Detail

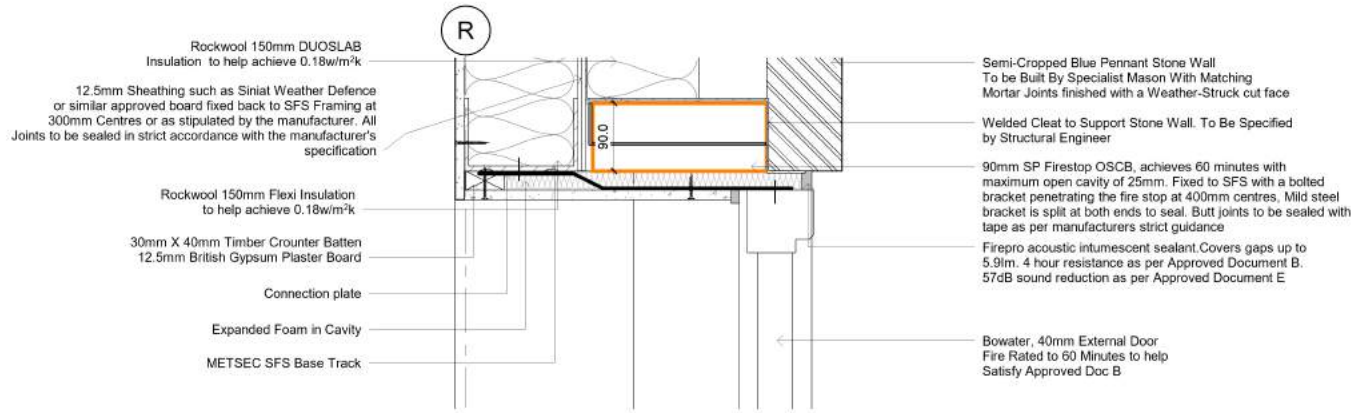
Student Name, Number: Samuel Tumbridge, 20124766

Scale: 1:5 Date: 02/21/20

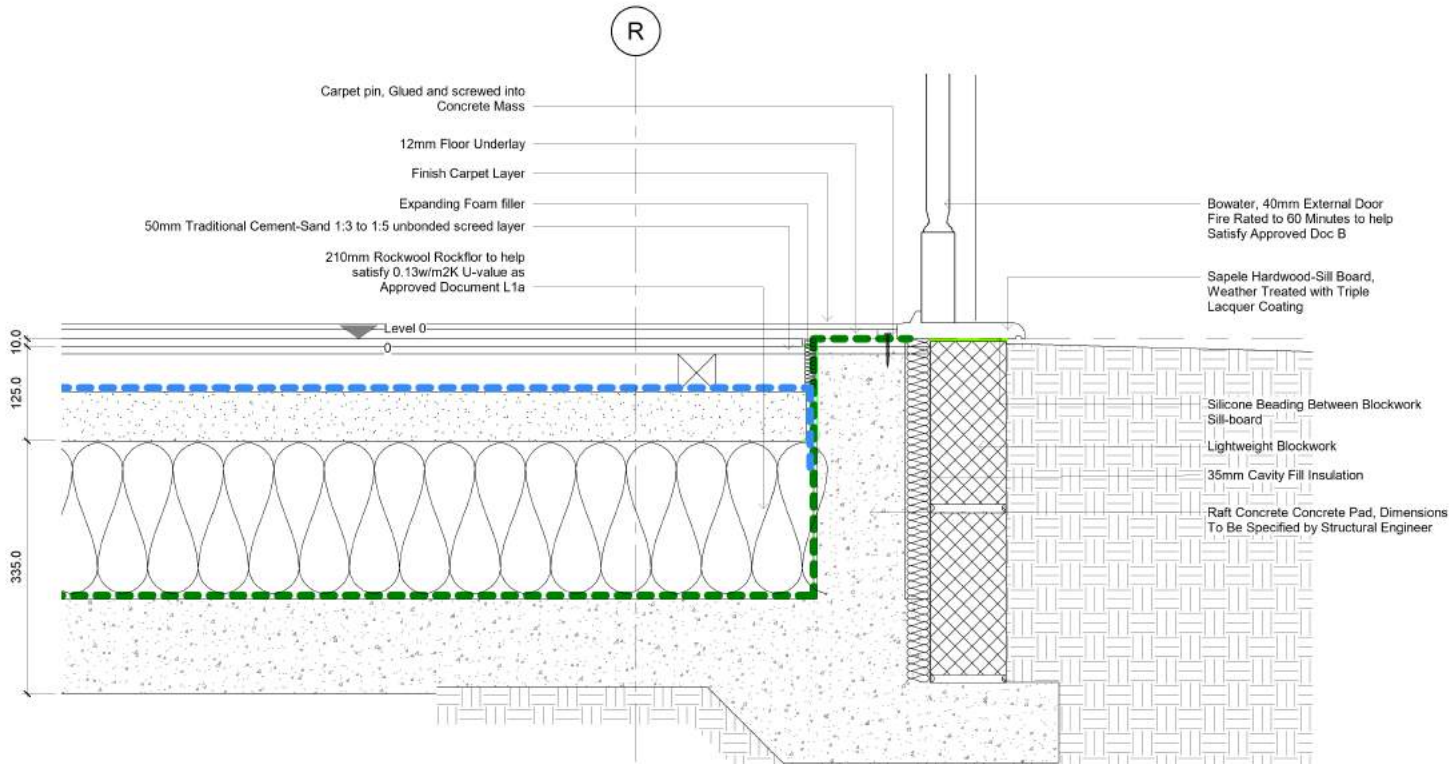
Drawing: DE3

Do not scale from this drawing. If ambiguities are found or additional dimensions required, these must be brought to the attention of the drawing originator. This drawing is to be read in conjunction with the all relevant project information including general arrangement drawings, specifications.

All works on this drawing must be carried out by a competent contractor, working to a risk assessment and method statement. Designers risk assessment should also be consulted for the identification of any design risks the client or contractor may not otherwise be aware.



**1 Door Jamb Detail**  
1 : 5



**2 Foundation Floor with Door Threshold**  
1 : 5

Project  
XXX\_Friars\_Pnt\_XXX

Drawn  
Ground Floor Detail

Student Name, Number  
Samuel Tumbridge, 20124766

Scale (D)  
1 : 5

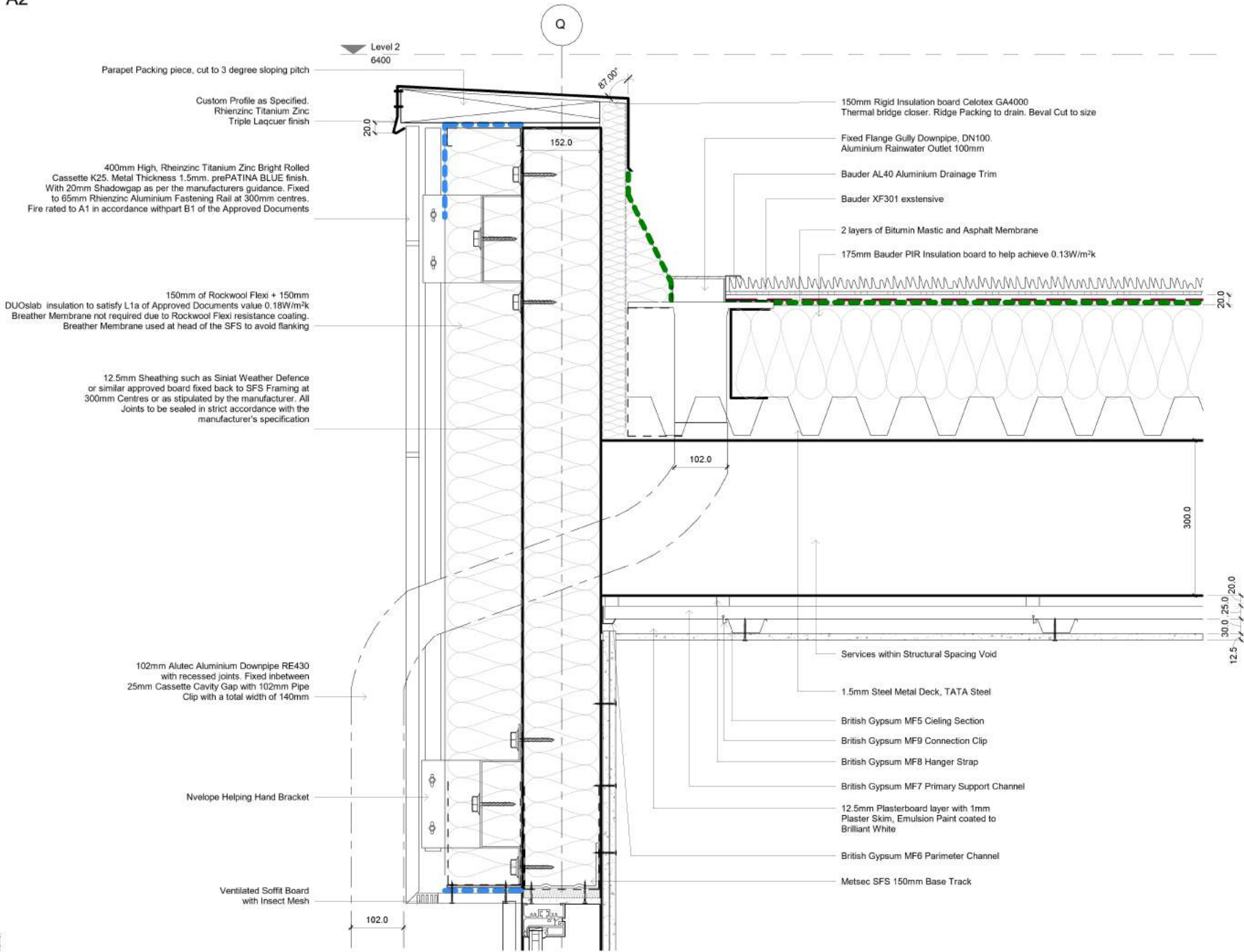
Date  
02/21/20

Drawing  
DE4

Do not scale from this drawing. If ambiguities are found or additional dimensions required, these must be brought to the attention of the drawing originator. This drawing is to be read in conjunction with the all relevant project information including general arrangement drawings, specifications.

All works on this drawing must be carried out by a competent contractor, working to a risk assessment and method statement. Designers risk assessment should also be consulted for the identification of any design risks the client or contractor may not otherwise be aware.

- EPDM
- Bauder Mesh DPM
- Tyvek DuPont Breather Membrane



**1 Residential Parapet Detail**  
1 : 5

Proj: XXX\_Friars\_Pnt\_XXX

Draw: Residential Parapet to Green Roof Detail

Student Name, Number: Samuel Tumbridge, 20124766

Scale (D): 1 : 5 Date: 02/21/20

Drawing: DE5

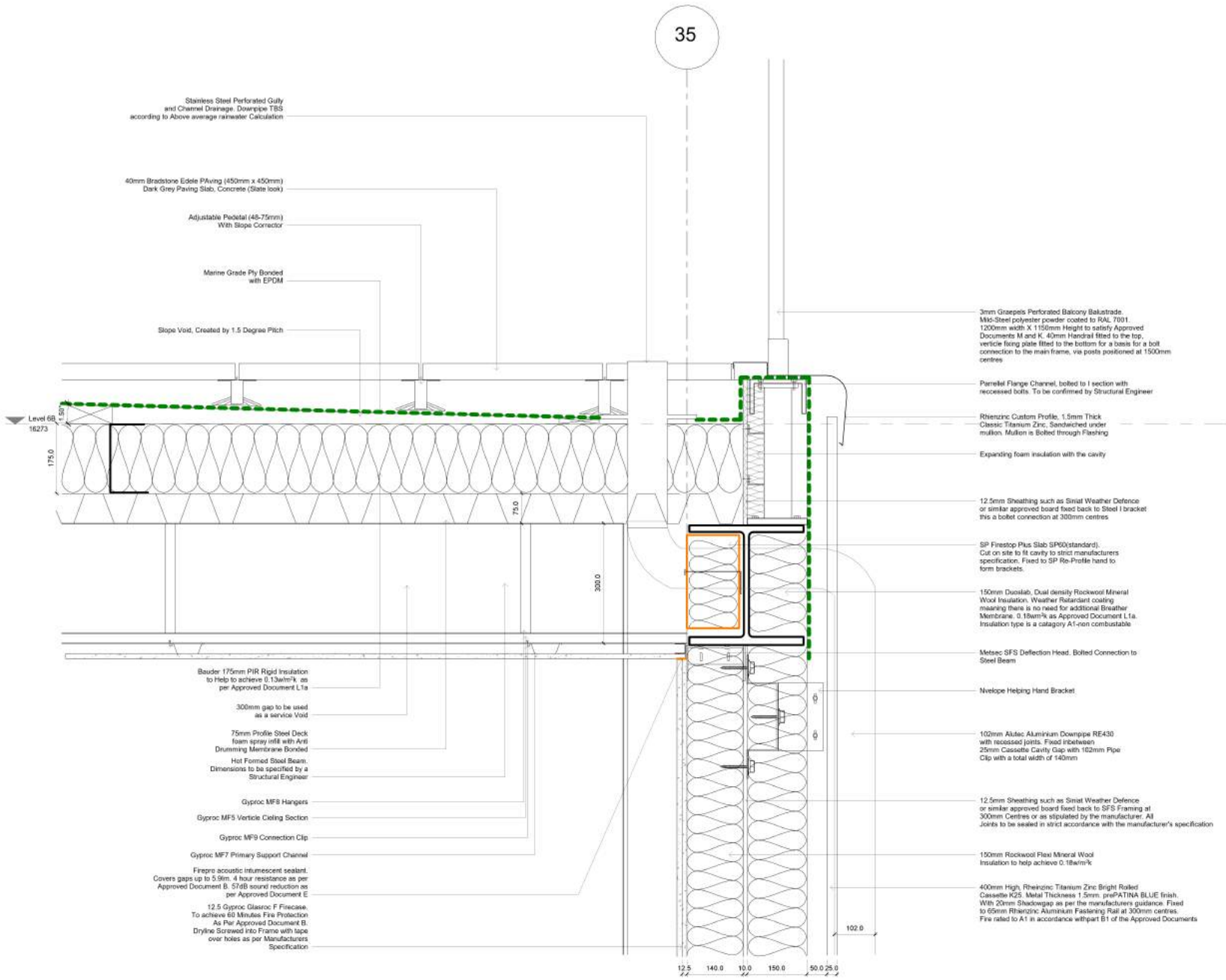


Do not scale from this drawing. If quantities are found or additional dimensions require, these should be brought to the attention of the drawing originator. This drawing is to be read in conjunction with the all relevant project information including general arrangement drawings.

All works on this drawing must be carried out by a competent contractor working to a risk assessment and method statement. Designers risk assessment should also be considered for the identification of any design risks. The client or contractor may not otherwise be suited.

EPDM

35



Project Name: XXX\_Friars\_Pnt\_XXX

Client: Roof Terrace to Cassette Wall Detail

Student Name: Samuel Tumbridge, 20124766

Scale: 1 : 5 Date: 02/21/20

Drawing: DE6

Cardiff Metropolitan University / Prifysgol Metropolitan Caerdydd

BSc (Hons) Architectural Design & Cardiff School of Art and Design | Cardiff Campus

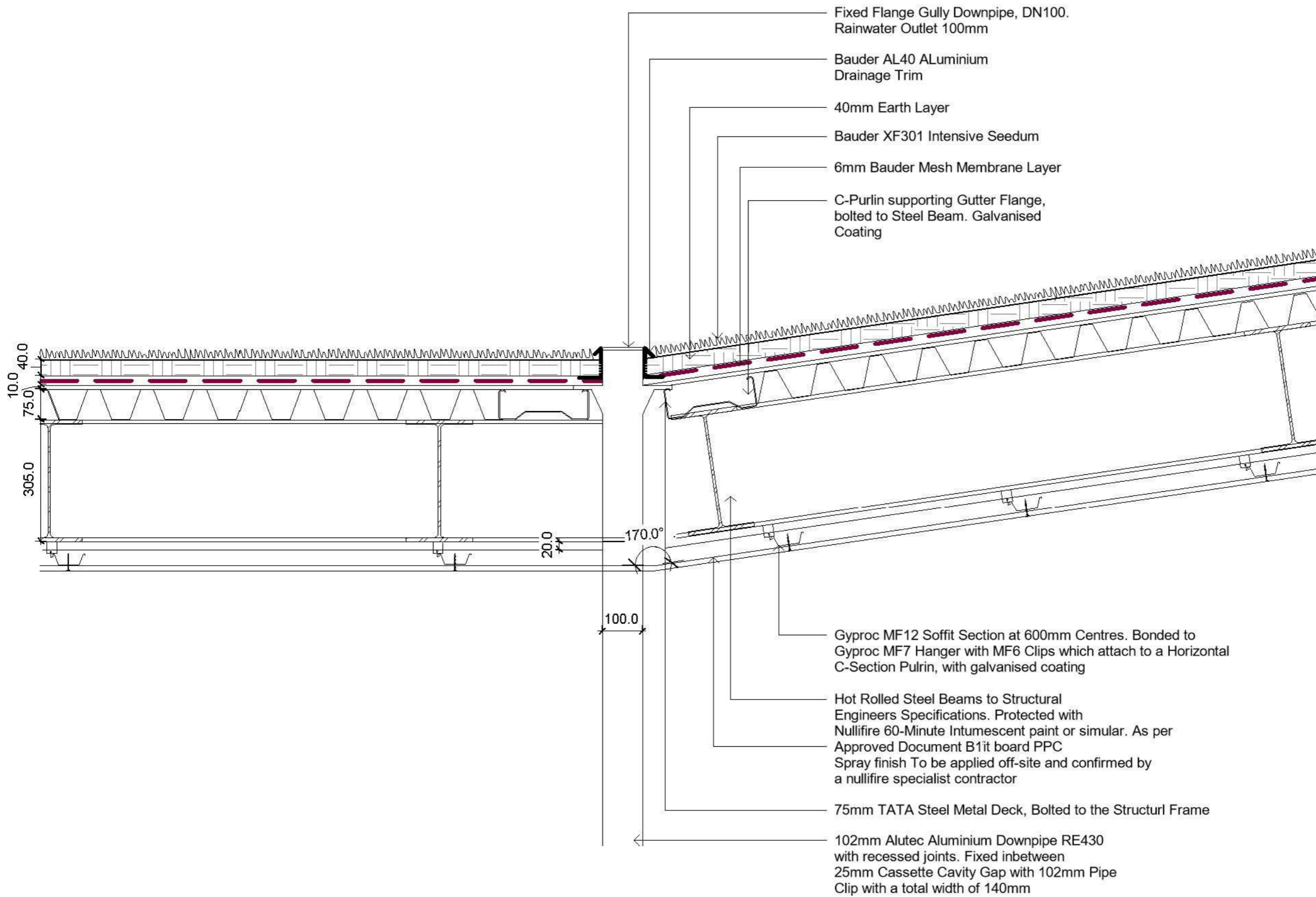
1 Roof Terrace to Cassette Wall 1 : 5

09/05/2020 14:04:31

Do not scale from this drawing. If ambiguities are found or additional dimensions required, these must be brought to the attention/ requested of the drawing originator. This drawing is to be read in conjunction with the all relevant project information including general arrangement drawings, specifications.

All works on this drawing must be carried out by a competent contractor, working to a risk assessment and method statement. Designers risk assessment should also be consulted for the identification of any design risks the client or contractor may not otherwise be aware.

— — — Bauder Mesh DPM



Proje  
XXX\_Friars\_Pnt\_XXX

Drawi  
Sloping Green Roof join with  
Drainage Detail

Student Name, Number  
Samuel Tumbridge, 20124766

Scale @                      Dat  
1 : 10                              02/21/20

Drawing  
DE7

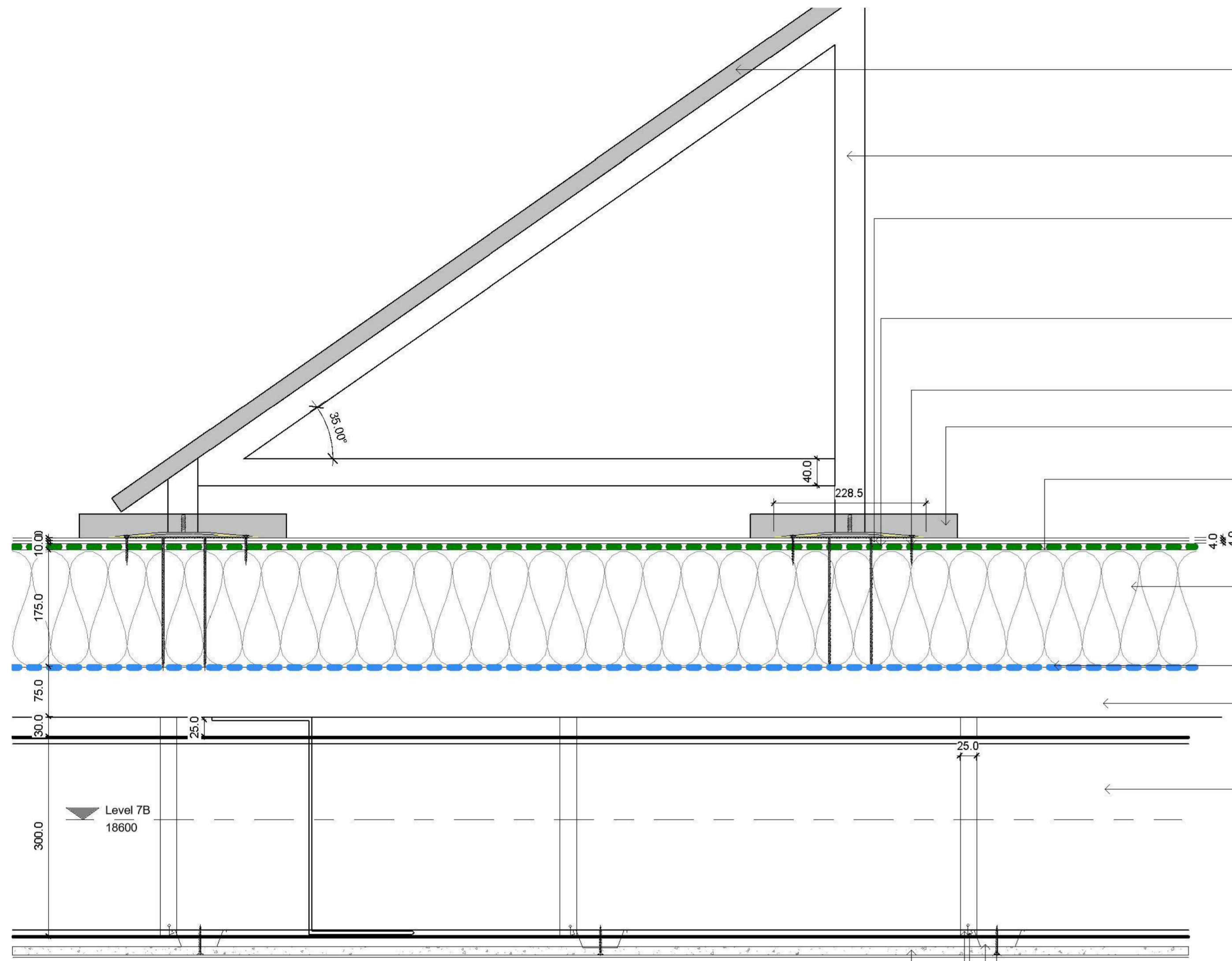


BSc (Hons) Architectural Design &  
Cardiff School of Art and Design | Llandaff Campus

# 1 Sloping Green Roof Join with Drainage

1 : 10

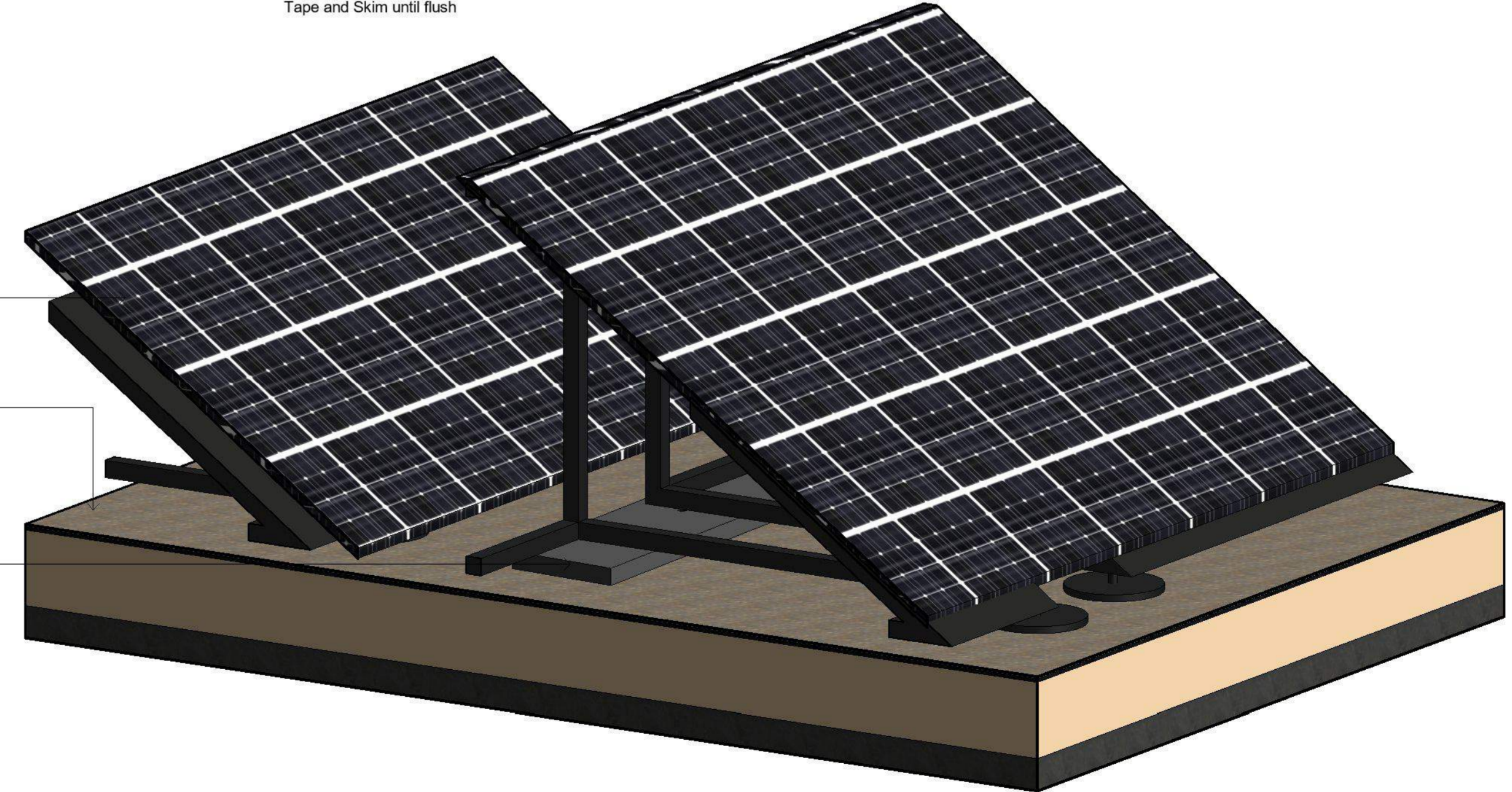
Do not scale from this drawing. If ambiguities are found or additional dimensions required, these must be brought to the attention of the drawing originator. This drawing is to be read in conjunction with the all relevant project information including general arrangement drawings, specifications.  
All works on this drawing must be carried out by a competent contractor, working to a risk assessment and method statement. Designers risk assessment should also be consulted for the identification of any design risks the client or contractor may not otherwise be aware.



- Mitsubishi NSP-Monocrystalline Photovoltaic Panel
- Adjustable Angle Solar Panel Mounting Brackets, Bolted into power-grip universal, Galvanised Coating
- Power-Grip Universal 11 Covering Plate. Mechanically fixed to Base Plate. Sealed with Waterblock Sealant
- Power-Grip Universal 11 Base Plate Mechanically Fixed with Foam Compression Base
- PGU-11 Hardware Fixing. To Be Specified by Supplier
- Bitumin Pitch Pocket. Hot Poured and Cast Around Fixing
- Dual Layer 4mm Bitumen Asphalt Heat Bonded with overlapping joins
- 175mm Bauder Rigid PIR Insulation Board To help Achieve 0.13w/m<sup>2</sup>k as per Approved Documents L1a
- 10mm Plyboard Underneath Breather Membrane, to provide grip basis for PGU-11 Screws
- 75mm TATA Steel Deck
- Hot Rolled Steel Beam To Be Specified by Structural Engineer. Service Cables run within beam void
- 40mm Dryliner Screws
- Gyproc MF5 Ceiling Section
- Gyproc MF9 Connection Clip
- 25mm Gyproc MF8 Hanger Strap
- Gyproc 12.5mm Plasterboard, Plaster Skim with Painted finish to Brilliant White. Liner-Screw holes covered with Fibre-Tape and Skim until flush

- Tyvek DuPont Breather Membrane
- EPDM
- Waterblock Sealant

- Mitsubishi NEO Solar PV. Arrays in lengths of 5.7m. To be pitched at 35 degrees
- Dual Bitumen layer bonded Ply membrane
- Example of Pitch Pocket Bitumen. To be poured into a plyboard form. Form is removed once bitumen has cured



Project  
XXX\_Friars\_Pnt\_XXX

Drawn  
Solar PV Roof Detail

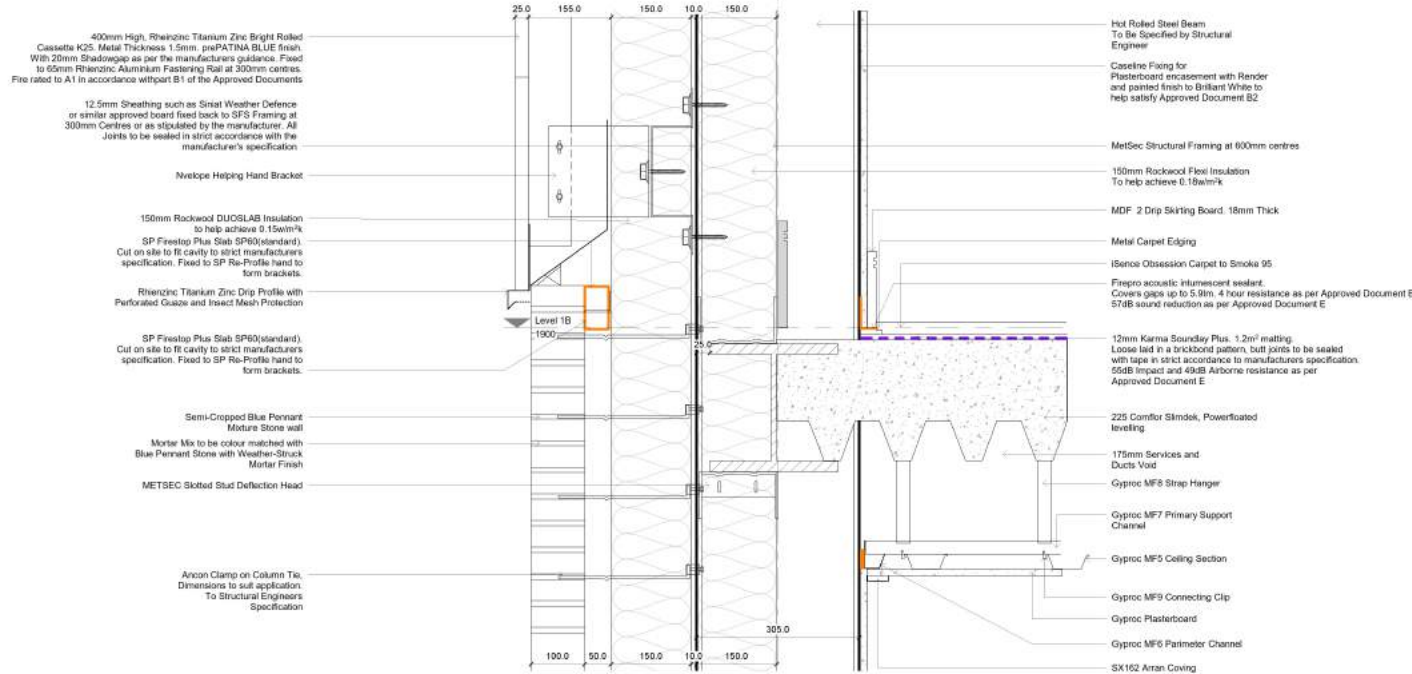
Student Name, Number  
Samuel Tumbridge, 20124766

Scale @      Date  
1 : 5      02/21/20

Drawing  
DE8

**1 Solar PV Detail**  
1 : 5

Interior



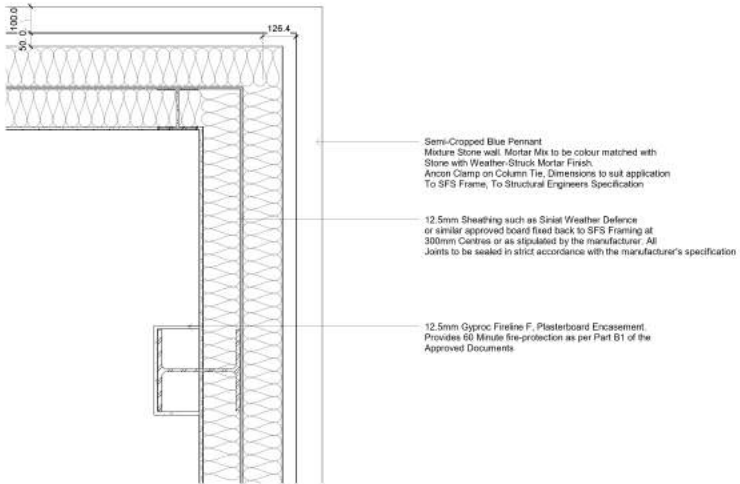
- Acoustic Sound Barrier
- Cavity Fire Protection Barrier
- Rockwool Firepro Acoustic Intumescent Sealant

Do not scale from this drawing. Specifications are found of additional dimensions required. Some noted on length to the exterior movement of the cladding organizer. This drawing is to be read in conjunction with the all relevant project information including general arrangement drawings.

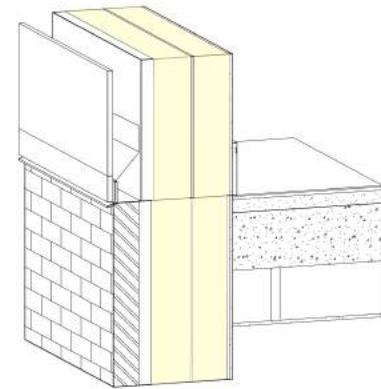
All works on this drawing must be carried out by a competent contractor working to a risk assessment and method statement. Design risk assessment should also be completed for the identification of any design risks the client or contractor may not otherwise be aware.

1 Stone Wall to Cassette Wall join with Intermediate Floor

1 : 5



- Semi-Cropped Blue Pennant Mature Stone wall. Mortar Mix to be colour matched with Stone with Weather-Struck Mortar Finish. Ancor Clamp on Column Tie, Dimensions to suit application To SFS Frame, To Structural Engineers Specification
- 12.5mm Sheathing such as Siniat Weather Defence or similar approved board fixed back to SFS Framing at 300mm Centres or as stipulated by the manufacturer. All Joints to be sealed in strict accordance with the manufacturer's specification
- 12.5mm Gyproc Finesse F Plasterboard Encasement. Provides 60 Minute Fire-protection as per Part B1 of the Approved Documents



Project  
XXX\_Friars\_Pnt\_XXX

Client  
Stone Wall to Cassette Wall join with Intermediate Floor Detail

Student Name, Number  
Samuel Tumbridge, 20124766

Scale @  
As indicated

Date  
02/21/20

Drawing  
DE9

2 Stone Wall to Cassette Wall Junction

1 : 10

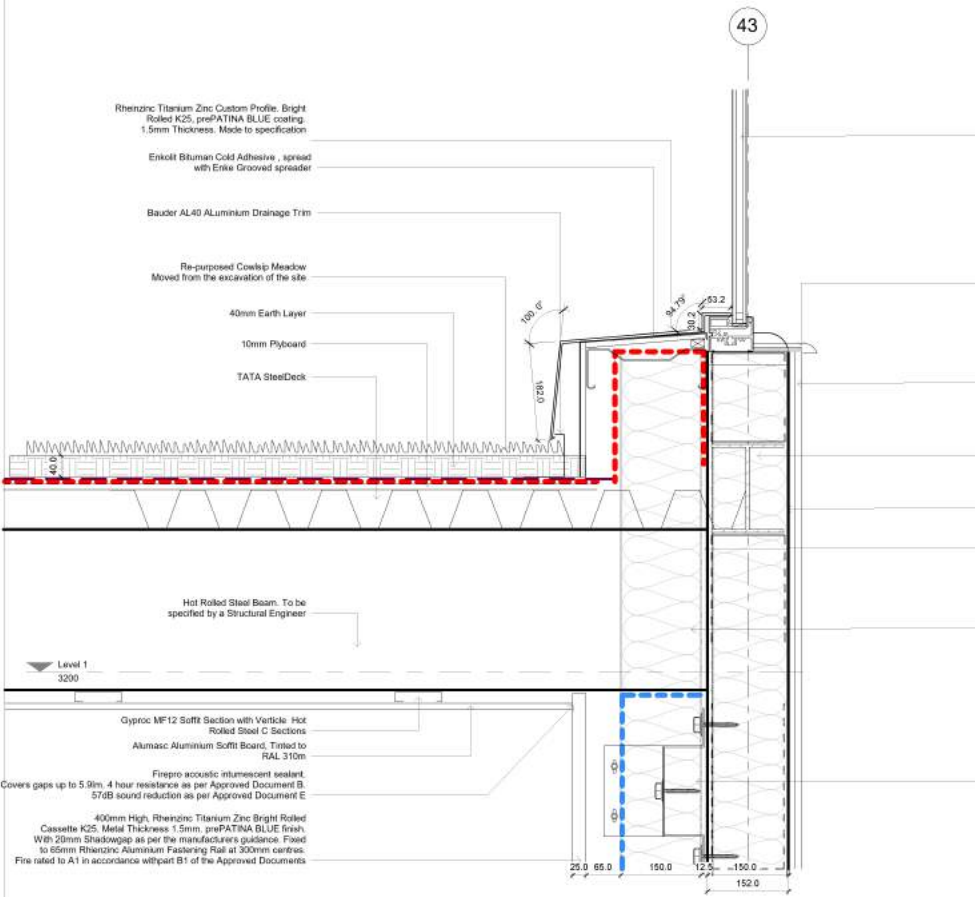
3 Stone Wall to Cassette Wall Junction

3

Do not scale from this drawing. Fabrications are found or additional dimensions required. Items noted on brought to the attention of the drawing originator. This drawing is to be used in conjunction with the approved project information including general arrangement drawings.

All works on this drawing must be carried out by a competent contractor working to a risk assessment and method statement. Design risk assessment should also be completed for the identification of any design risks. The client or contractor may not otherwise be suited.

43



Pkington Insight Sun, Argon Filled, Double Glazed, Arlic Blue Tint to reach 1.2w/m<sup>2</sup>k

Insulated Window Board to reduce thermal bridging through window mullion

Mechanically Fixed Gypsum Wall Board, Plaster Finished coated with Emulsion Paint to RAL 9010 Off-White

Rockwool DUOSLAB 150mm Rigid Insulation within SFS Frame to help achieve 0.15w/m<sup>2</sup>k

Hot Rolled Structural Steel Frame To be Specified by Structural Engineer

12.5mm Sheathing such as Srialat Weather Defence or similar approved board fixed back to SFS Framing at 300mm Centres or as stipulated by the manufacturer. All Joints to be sealed in strict accordance with the manufacturer's specification

Rockwool Flex Insulation inbetween Helping-Hand brackets to help achieve 0.18w/m<sup>2</sup>k

Envelope Helping Hand Bracket

Rhine zinc Titanium Zinc Bright Rolled Custom Profile 1.5mm with Maringrade Plyboard Reinforcement

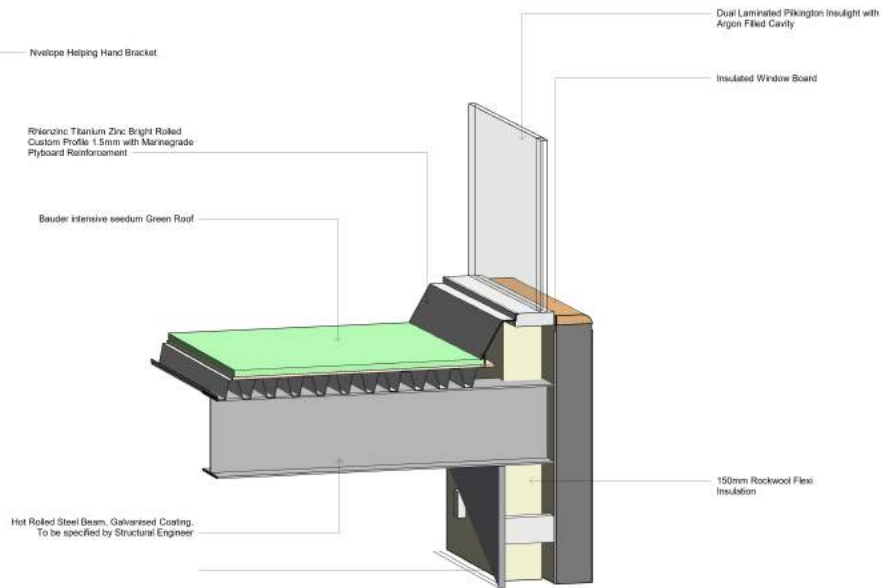
Bauder intensive seedum Green Roof

Hot Rolled Steel Beam, Galvanised Coating, To be specified by Structural Engineer

- Bauder Mesh DPM
- Tyvek DuPont Breather Membrane
- Vapour Membrane

**1 Window to Green Roof Detail**  
1 : 5

**2 Green Roof to Window**



From  
XXX\_Friars\_Pnt\_XXX

Client  
Window to Green Roof Detail

Student Name, Number  
Samuel Tumbridge, 20124766

Scale @  
1 : 5

Date  
02/21/20

Drawing  
DE10

Cardiff Metropolitan University  
BSc (Hons) Architectural Design & Cardiff School of Art and Design | Cardiff Campus

Prifysgol Metropolitan Caerdydd