

BAY ART CENTRE

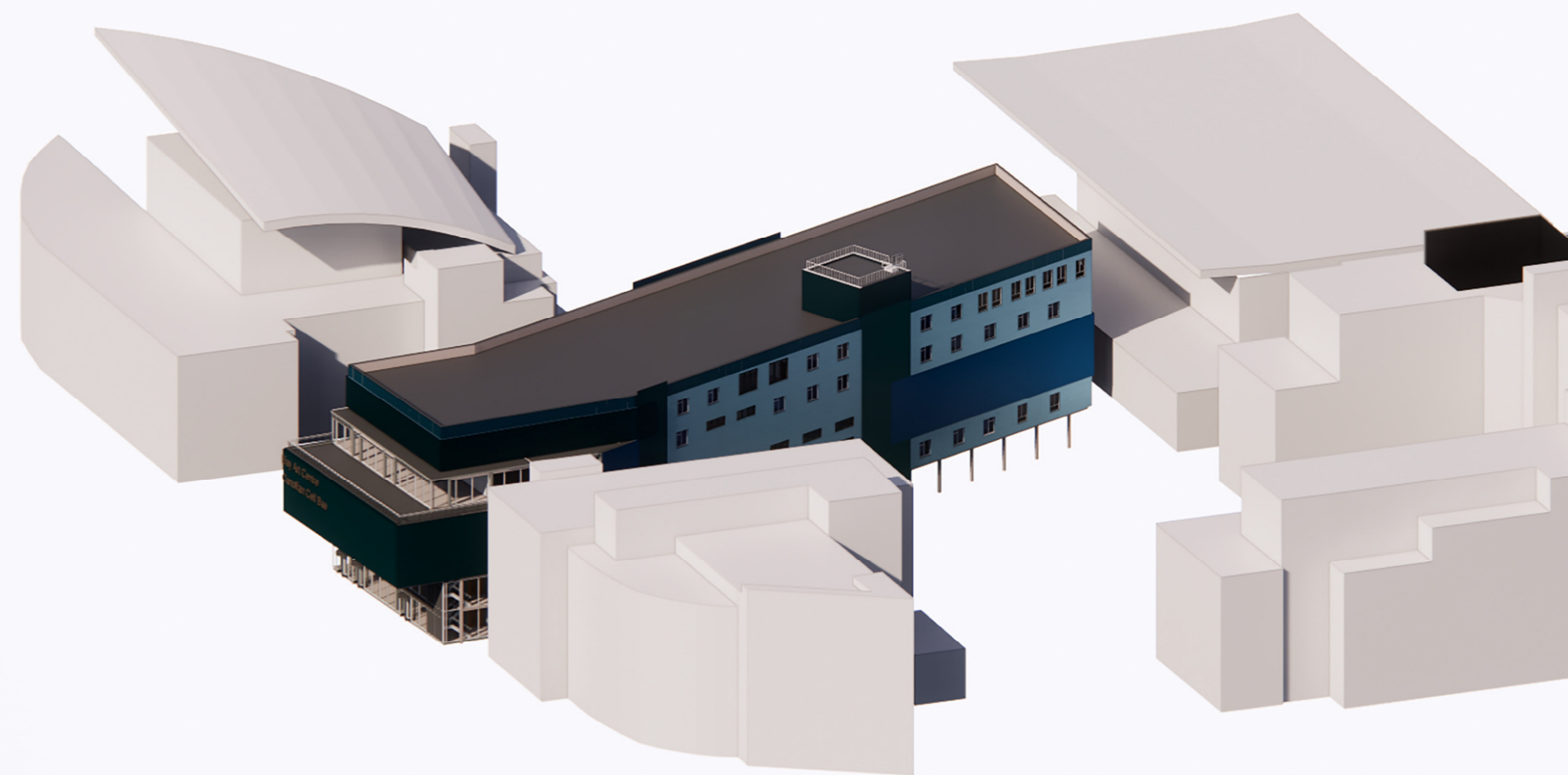
The Bay Art Centre will be located in a stunning position in Cardiff Bay, looking south to spectacular views of the sea. It has been designed with the following concepts at its core:

SUSTAINABILITY: At the heart of the building, biophilic principles influence eco-friendliness and longevity. Low-maintenance, waste-free and durable materials are used to protect the environment, in addition to solar thermal heating. The building aims to stride into the future of eco-friendly design by positively using waste blast slag from coal plants.

CREATIVITY: Due to the open nature of the available space and with clever use of internal concrete cast in Douglas Fir it creates a link with nature and the outside elements. The building brief required an inspiring building, promoting ingenuity and free-thinking. Soaring ceilings and uplifting lighting boost creativity and promote a feeling of expressiveness and well being. Wide and clear windows throughout promote views of the sea and a calming, tranquil garden with commissioned outdoor sculptures adding a stimulating and thoughtful area to contemplate and rest.

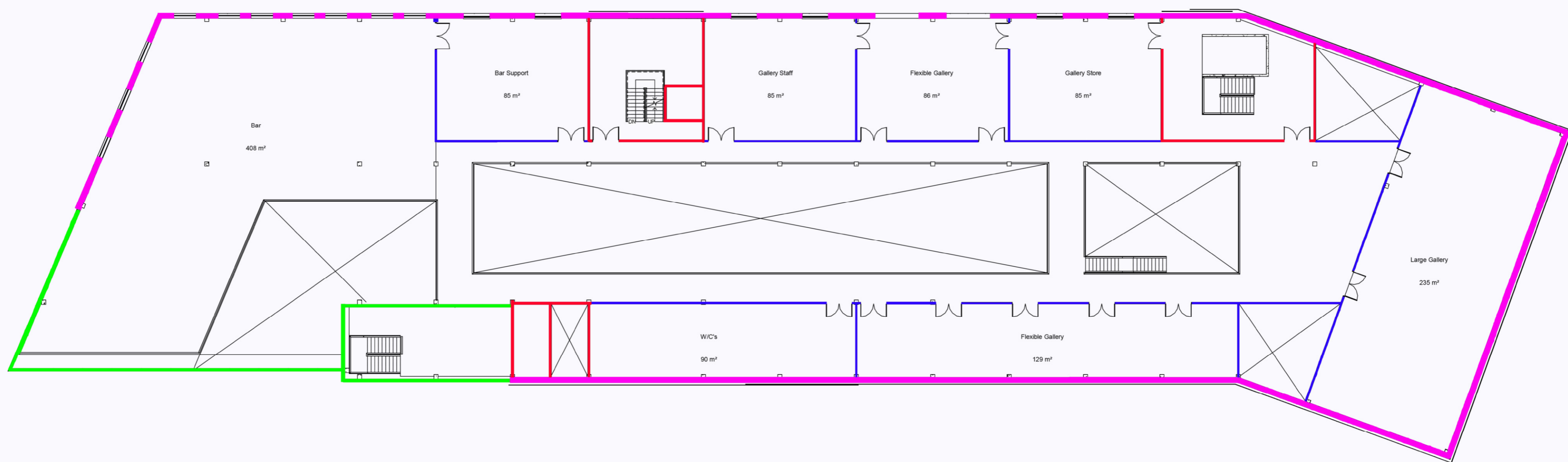
FUNCTION: The use of the building varies by room, from Art Gallery, Dance Studio, to Music Center, therefore the entire building is designed to optimise the use for each room, with sound absorption built into the fabric to reduce disturbance from neighbouring spaces, allowing full use and maximising potential. High ceilings lift the spirit and provide a practical and clever use of different perspectives.

FLEXIBLE: A wide variety of people will be using the space, from families to professionals, therefore the space must suit an array of individuals. From painting to performing, the different areas of the building must be fully functional and aesthetically pleasing in every area, ensuring that all areas are inspiring and effective.



DESIGN: Design is the crucial factor in providing the pedestrian with a spectacular first impression of the Art Centre, exciting them before they enter. Eye-catching, bold and complimentary to surrounding architectural creations enhancing them and providing a cohesive blend of Architecture, whilst maintaining it's strong personality.

FLOOR PLAN

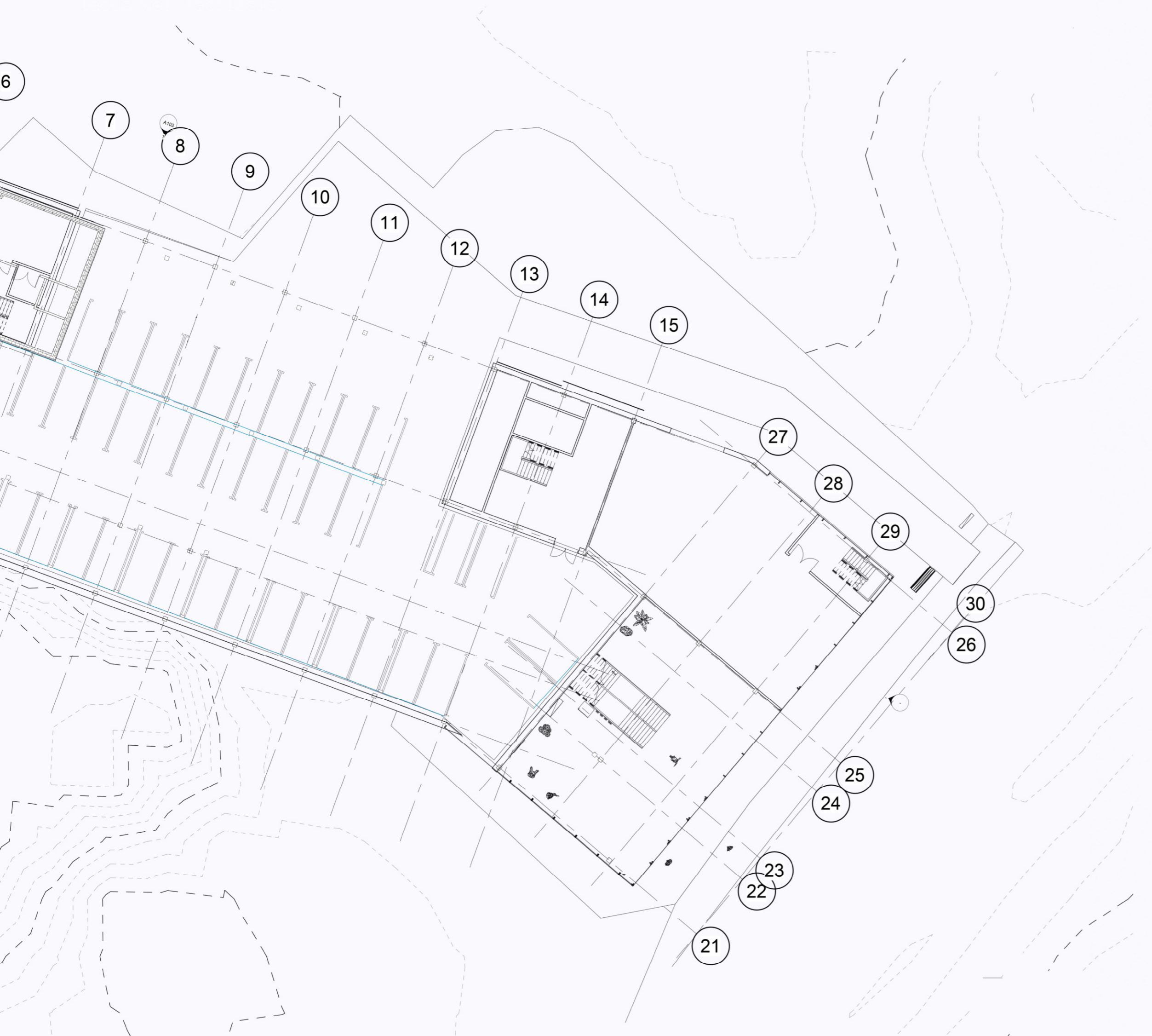


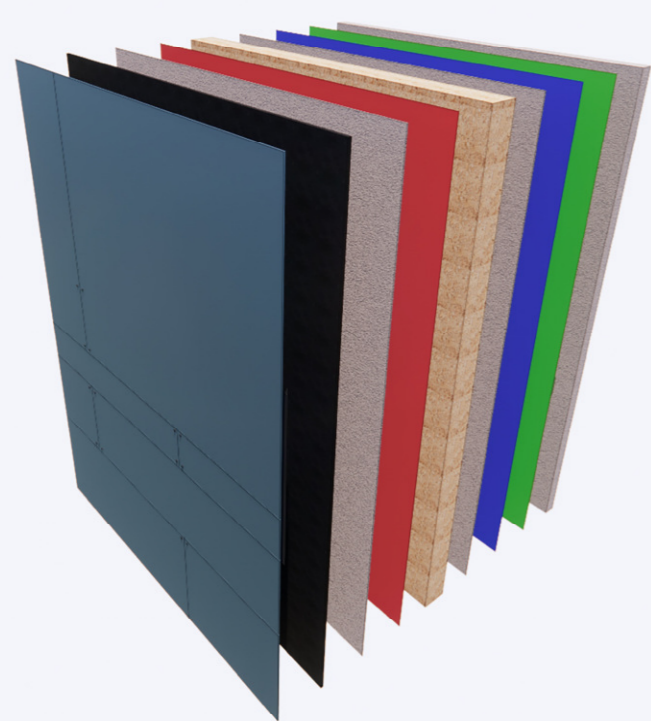
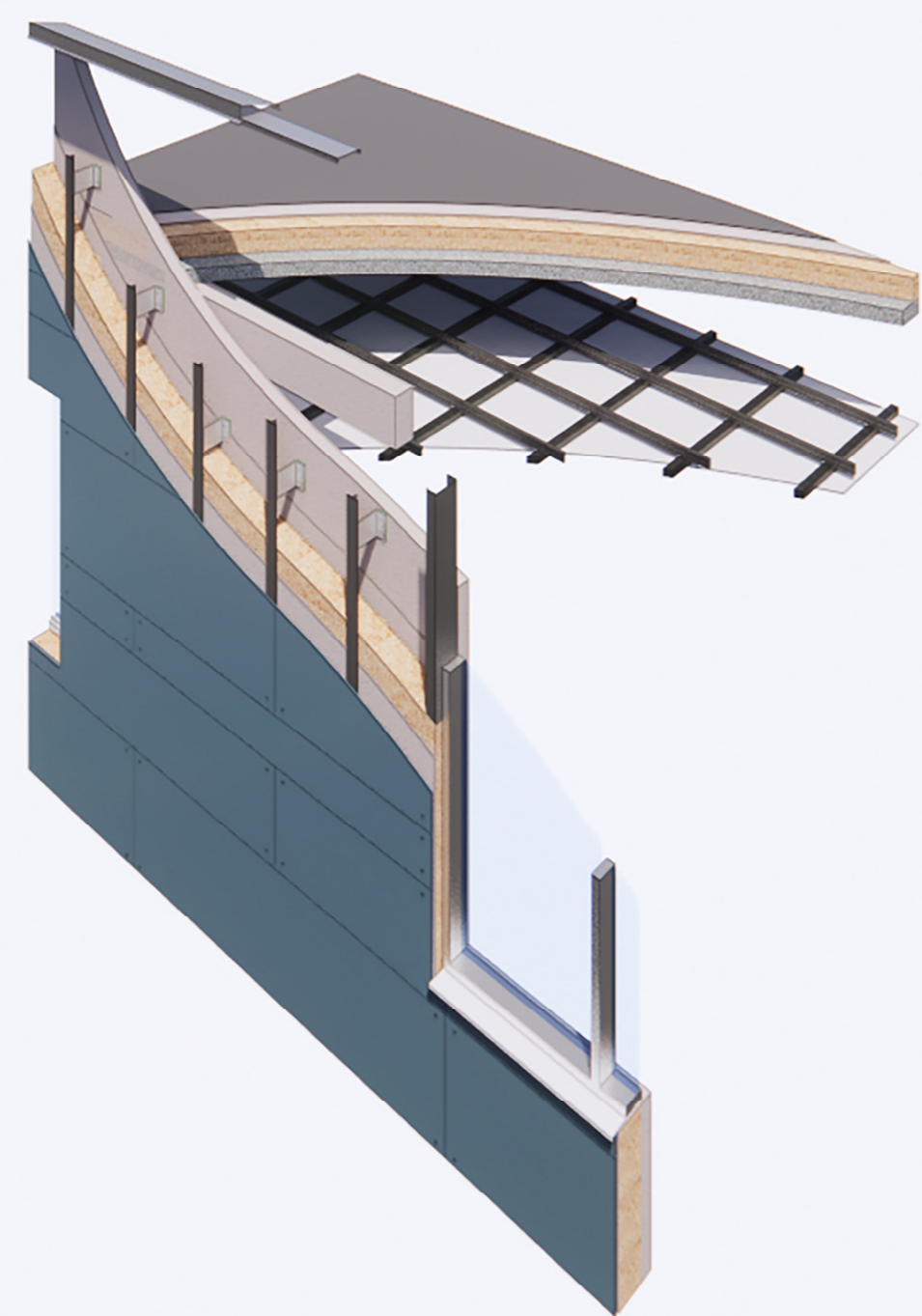
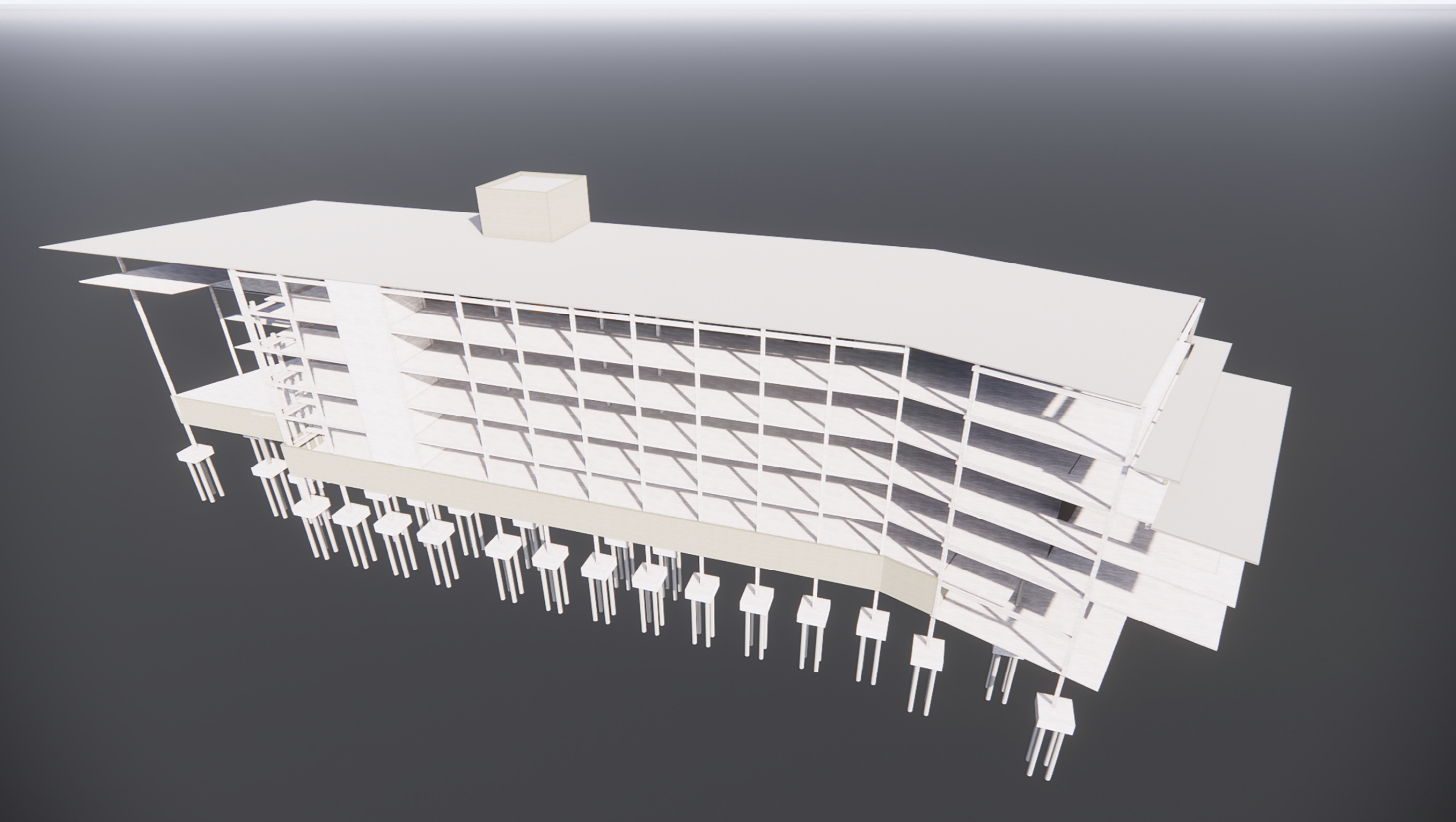
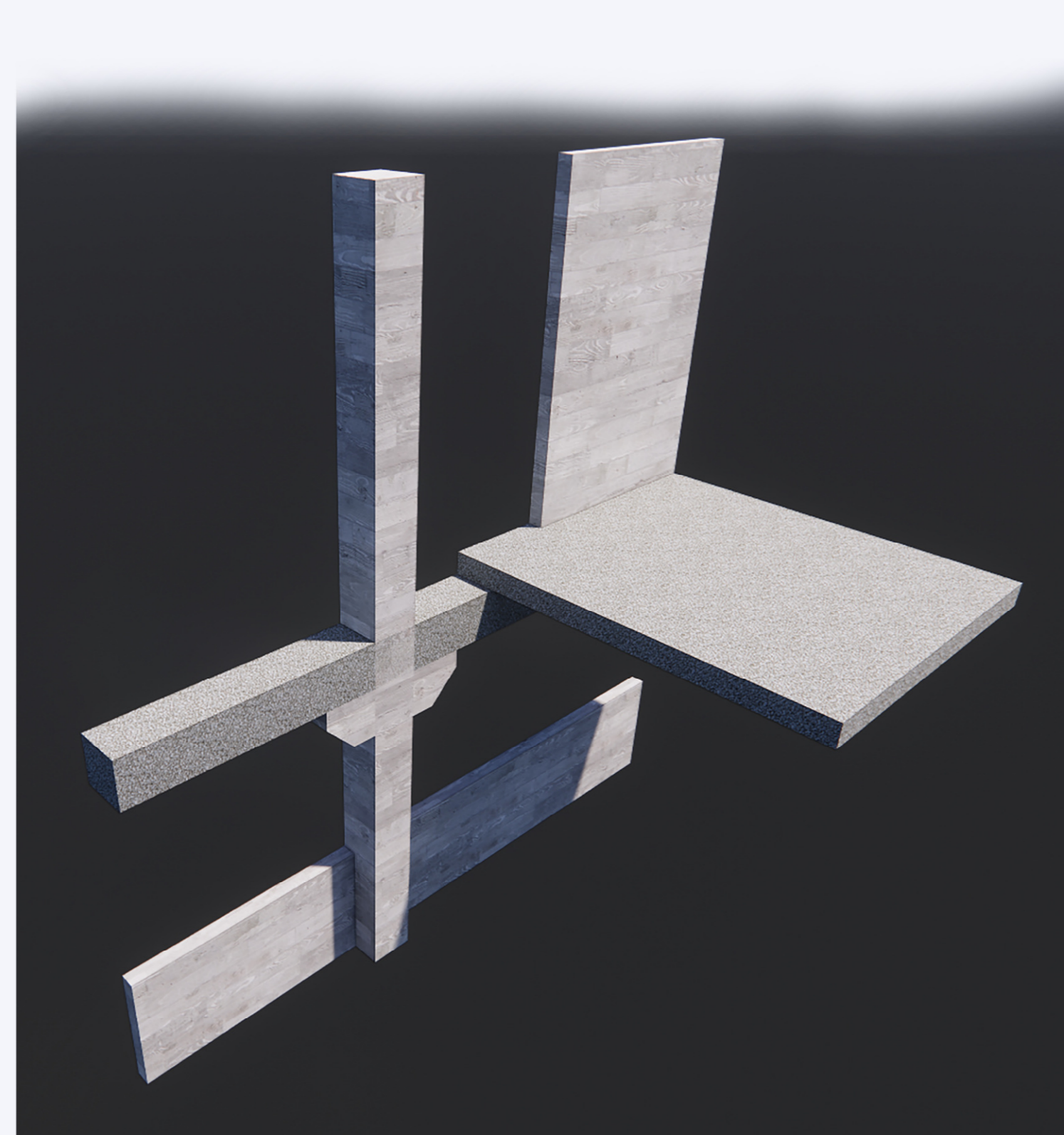
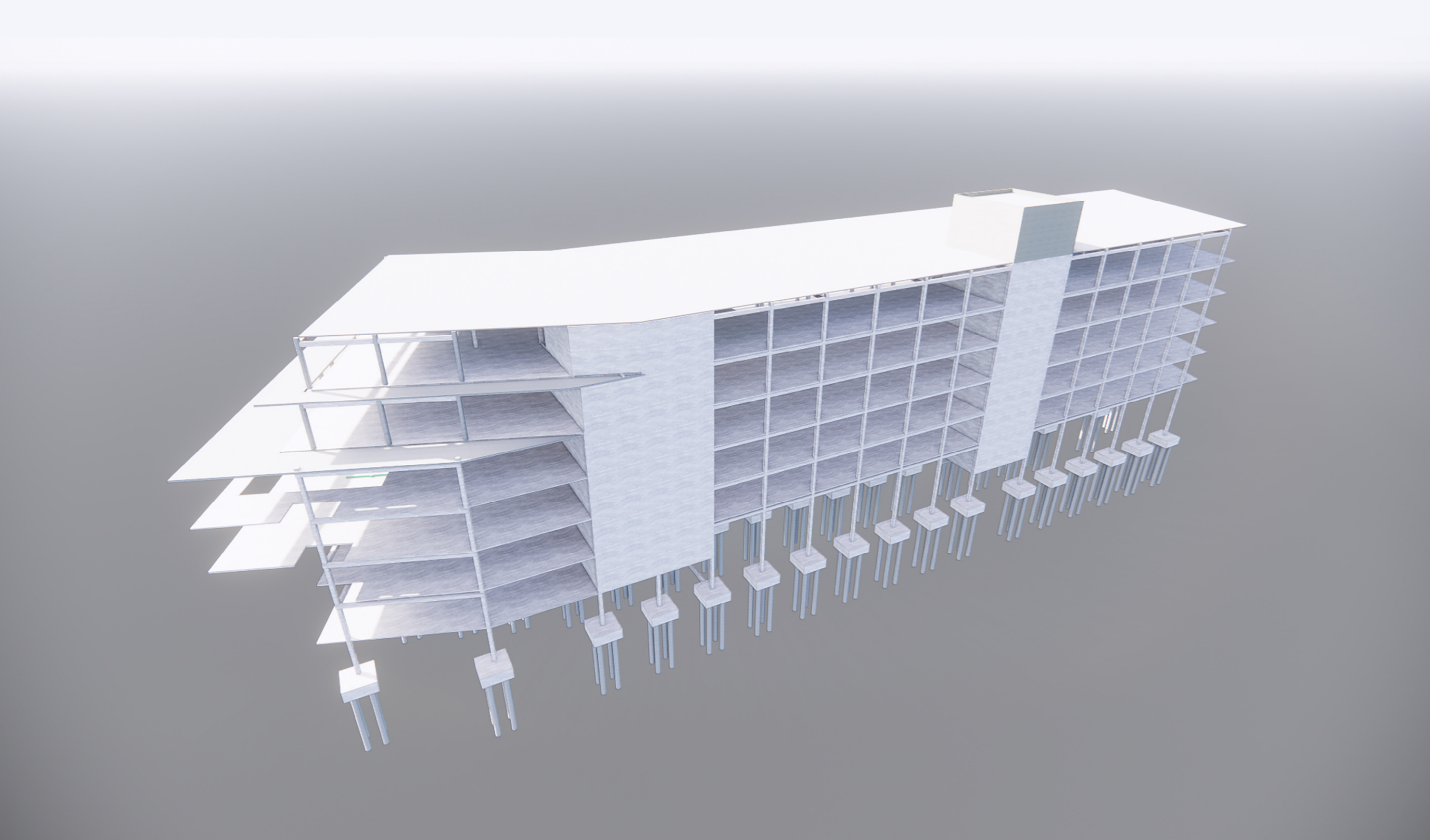
Key

- External wall
- Internal wall
- Compartment wall
- Curtain wall

Site Plan: The site location includes two exceptional vistas for looking out on the waterfront, which have been showcased with glazing on both the entrances. The Southern side also makes use of the sunlight by providing a spacious garden for rest and relaxation, complete with an accessible ramp and plenty of shaded seating. The garden, rest area is designed with a number of specific areas to display commissioned art work turning the outdoors into additional gallery space.

Entry into the site features a dropped curb access for cars with a 4000m wide road. A zebra crossing allows for safe crossing and a personal electric advertisement board will help to notify pedestrians or events and shows. It is crucial that, as a leisure assembly building, that all people can access the building, so adequate parking for for both disabled cars and bicycles has been provided under the protection of the first floor.



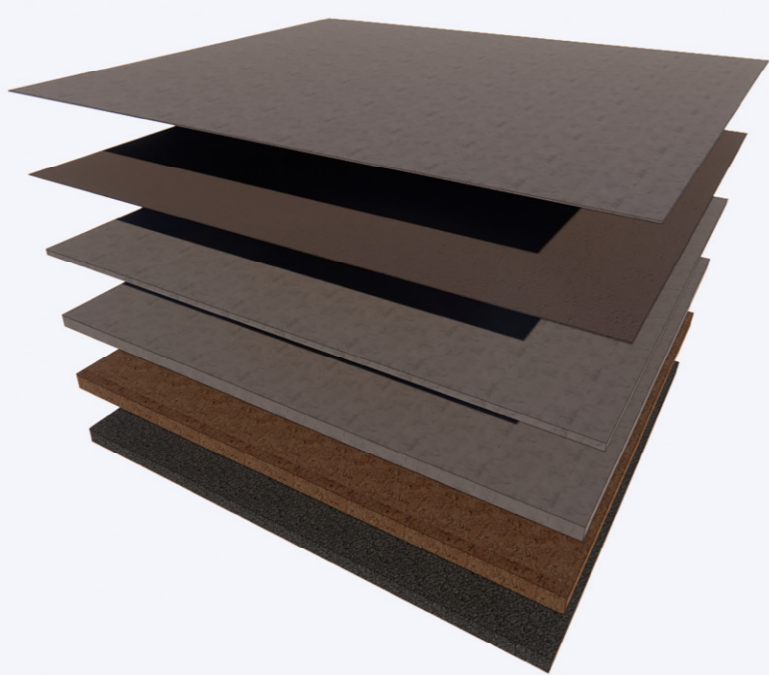


Wall Build up:

1. Cembrit Solid S757 8mm
2. Aluminium Cembrit Rivets
3. IKO Rubershield Eco-
4. Secil Argamassas SecilVit adhesive
5. Ty Mawr Eco-cork Rigid insulation
6. Secil Argamassas SecilVit adhesive
7. SecilVit Fibreglass Mesh 343
8. Visqueen Vapour Barrier
9. Hanson Eco+ Concrete

Roof Build up

1. Vapour Control Barrier
2. Hanson Eco+ Concrete
3. IKO Permateg Primer
4. IKO permateg Anti-root Hot Melt
5. IKO Permaguard R Reinforcement
6. IKO Permateg Anti-root Hot Melt
7. IKO Permaguard F Protection Layer
8. IKO Enertherm XPS
9. IKO Rubershield Eco
10. IKO Permascreed L
11. Firestone RubberCover



Floor Build up:

1. Hanson Eco+ Concrete
2. Ty Mawr EcoCork Rigid Insulation
3. Ardex A 35 Rapid Setting Screed
4. Ardex Levelling Compound
5. Ardex S 16 Adhesive
6. Forbo Marmoleum Striato Welsh Moor

Ceiling Build Up

1. Rockfon System
2. Rockfon Suspended ceiling tiles

