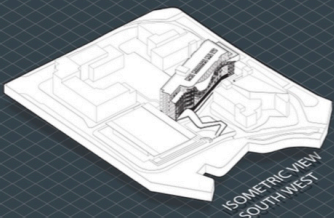
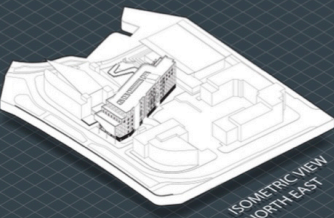
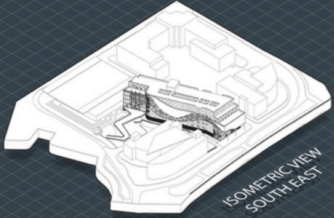
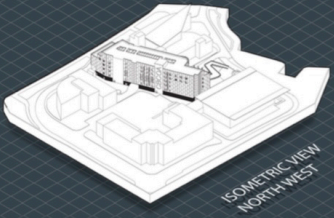
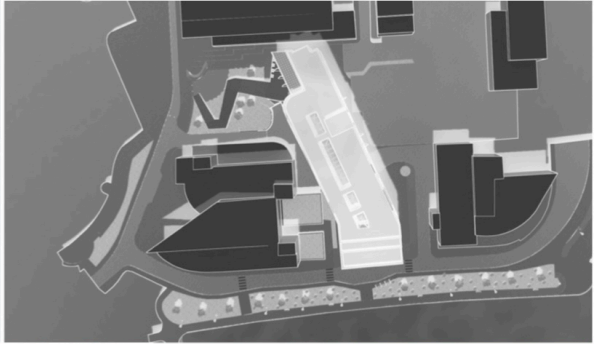


CARDIFF BAY CENTRE OF ARTS

THE PROPOSED BUILDING IS A SIX STOREY ART CENTRE LOCATED AT CARDIFF BAY WITH HIGH QUALITY ART FACILITIES, MULTI PURPOSE SPACES, TWO THEATRES FOR PERFORMING ARTS, LARGE EXHIBITION SPACES.

THIS DESIGN FEATURES A LARGE MICROALGAE BIOREACTOR WHICH HARNESSES THE ENERGY ALGAE PRODUCE WHEN STIMULATED BY SUNLIGHT PROVIDING THE BUILDING WITH GREEN ELECTRICITY.



FLOOR PLAN KEY

GROUND FLOOR CAR PARK & MAIN ENTRY ATRIUM	FIRST FLOOR MAIN FLOOR & SECOND ENTRY ATRIUM	THIRD FLOOR PERFORMANCE ART	FIFTH FLOOR EXHIBITION & ROOF TOP CAFE
COMPARTMENTED SHOP SELF CONTAINED SHOP	SECOND FLOOR PERFORMANCE ART	FOURTH FLOOR LECTURE SPACES & ART FACILITIES	TOILETS

